

## Product datasheet for **AP54698PU-N**

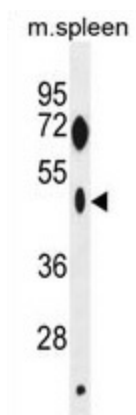
### **ZNF385C (N-term) Rabbit Polyclonal Antibody**

#### **Product data:**

Product Type:	Primary Antibodies
Applications:	WB
Recommended Dilution:	Peptide ELISA: 1:1000. Western blot: 1:1000.
Reactivity:	Human, Mouse
Host:	Rabbit
Isotype:	Ig
Clonality:	Polyclonal
Immunogen:	KLH conjugated synthetic peptide between 77-106 amino acids from the N-terminal region of human ZNF385C.
Specificity:	This antibody detects ZNF385C (N-term).
Formulation:	PBS with 0.09% (W/V) sodium azide State: Aff - Purified State: Liquid Ig fraction
Concentration:	lot specific
Purification:	Protein A column followed by peptide affinity purification
Conjugation:	Unconjugated
Storage:	Store undiluted at 2-8°C for one month or (in aliquots) at -20°C for longer. Avoid repeated freezing and thawing.
Stability:	Shelf life: one year from despatch.
Gene Name:	zinc finger protein 385C
Database Link:	<a href="#">Entrez Gene 201181 Human Q66K41</a>
Synonyms:	Zinc finger protein 385C
Note:	<b>Molecular Weight:</b> 44107 Da



[View online »](#)

**Product images:**

ZNF385C Antibody (N-term) western blot analysis in mouse spleen tissue lysates (35 ug/lane). This demonstrates the ZNF385C antibody detected the ZNF385C protein (arrow).