

Product datasheet for **AP54693PU-N**

ZNF350 (Center) Rabbit Polyclonal Antibody

Product data:

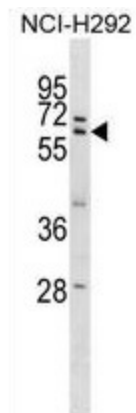
Product Type:	Primary Antibodies
Applications:	WB
Recommended Dilution:	ELISA: 1:1;000. Western blot: 1:100~500.
Reactivity:	Human
Host:	Rabbit
Isotype:	Ig
Clonality:	Polyclonal
Immunogen:	KLH conjugated synthetic peptide between 175-204 amino acids from the Central region of human ZNF350
Specificity:	This antibody detects ZNF350 (Center).
Formulation:	PBS with 0.09% (W/V) sodium azide State: Aff - Purified State: Liquid Ig fraction
Concentration:	lot specific
Purification:	Protein A column followed by peptide affinity purification
Conjugation:	Unconjugated
Storage:	Store at 2 - 8 °C for up to six months or (in aliquots) at -20 °C for longer. Avoid repeated freezing and thawing.
Stability:	Shelf life: one year from despatch.
Gene Name:	zinc finger protein 350
Database Link:	Entrez Gene 59348 Human Q9GZX5
Background:	ZNF350 is a transcriptional repressor. It binds to a specific sequence, 5'-GGGxxxCAGxxxTTT-3', within GADD45 intron 3.
Synonyms:	Zinc finger protein 350, ZBRK1, ZFQR
Note:	Molecular Weight: 60011 Da



[View online »](#)

Protein Families: Transcription Factors

Product images:



ZNF350 Antibody (Center) western blot analysis in NCI-H292 cell line lysates (35 ug/lane). This demonstrates the ZNF350 antibody detected the ZNF350 protein (arrow).