

Product datasheet for **AP54692PU-N**

ZNF35 (Center) Rabbit Polyclonal Antibody

Product data:

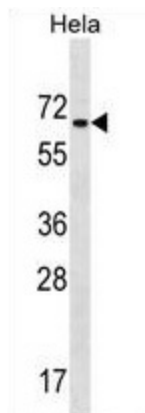
Product Type:	Primary Antibodies
Applications:	WB
Recommended Dilution:	ELISA: 1:1;000. Western blot: 1:100~500.
Reactivity:	Human
Host:	Rabbit
Isotype:	Ig
Clonality:	Polyclonal
Immunogen:	KLH conjugated synthetic peptide between 143-173 amino acids from the Central region of human ZNF35
Specificity:	This antibody detects ZNF35 (Center).
Formulation:	PBS with 0.09% (W/V) sodium azide State: Aff - Purified State: Liquid Ig fraction
Concentration:	lot specific
Purification:	Protein A column followed by peptide affinity purification
Conjugation:	Unconjugated
Storage:	Store at 2 - 8 °C for up to six months or (in aliquots) at -20 °C for longer. Avoid repeated freezing and thawing.
Stability:	Shelf life: one year from despatch.
Gene Name:	zinc finger protein 35
Database Link:	Entrez Gene 7584 Human P13682
Background:	ZNF35 may be involved in transcriptional regulation. Involved in cell differentiation and/or proliferation.
Synonyms:	Zinc finger protein 35
Note:	Molecular Weight: 59089 Da



[View online »](#)

Protein Families: Transcription Factors

Product images:



ZNF35 Antibody (Center) western blot analysis in HeLa cell line lysates (35 ug/lane). This demonstrates the ZNF35 antibody detected the ZNF35 protein (arrow).