

Product datasheet for **AP54689PU-N**

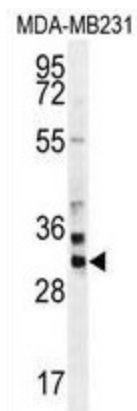
ZNF321P (ZNF816-ZNF321P) (N-term) Rabbit Polyclonal Antibody

Product data:

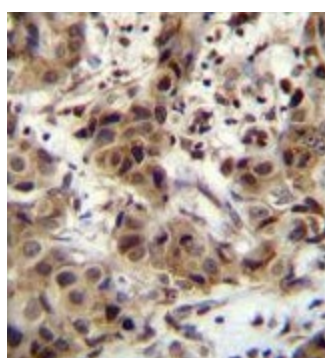
Product Type:	Primary Antibodies
Applications:	IHC, WB
Recommended Dilution:	ELISA: 1:1;000. Western blot: 1:100~500. Immunohistochemistry on paraffin sections.
Reactivity:	Human
Host:	Rabbit
Isotype:	Ig
Clonality:	Polyclonal
Immunogen:	KLH conjugated synthetic peptide between 1-30 amino acids from the N-terminal region of human ZNF321
Specificity:	This antibody detects ZNF321 (N-term).
Formulation:	PBS with 0.09% (W/V) sodium azide State: Aff - Purified State: Liquid Ig fraction
Concentration:	lot specific
Purification:	Protein A column followed by peptide affinity purification
Conjugation:	Unconjugated
Storage:	Store at 2 - 8 °C for up to six months or (in aliquots) at -20 °C for longer. Avoid repeated freezing and thawing.
Stability:	Shelf life: one year from despatch.
Gene Name:	ZNF816-ZNF321P readthrough
Database Link:	Entrez Gene 100529240 Human Q8N8H1
Synonyms:	ZNF321P, Zinc finger protein 321 pseudogene
Note:	Molecular Weight: 27027 Da



[View online »](#)

Product images:

ZNF321 Antibody (N-term) western blot analysis in MDA-MB231 cell line lysates (35 ug/lane). This demonstrates the ZNF321 antibody detected the ZNF321 protein (arrow).



ZNF321 Antibody (N-term) immunohistochemistry analysis in formalin fixed and paraffin embedded human breast carcinoma followed by peroxidase conjugation of the secondary antibody and DAB staining. This data demonstrates the use of ZNF321 Antibody (N-term) for immunohistochemistry. Clinical relevance has not been evaluated.