

## Product datasheet for **AP54682PU-N**

### ZNF263 (Center) Rabbit Polyclonal Antibody

#### Product data:

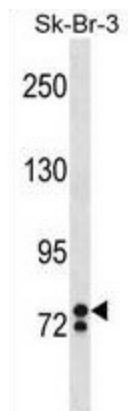
Product Type:	Primary Antibodies
Applications:	WB
Recommended Dilution:	Peptide ELISA: 1:1000. Western blot: 1:1000.
Reactivity:	Human
Host:	Rabbit
Isotype:	Ig
Clonality:	Polyclonal
Immunogen:	KLH conjugated synthetic peptide between 317-346 amino acids from the Central region of human ZNF263
Specificity:	This antibody detects ZNF263 (Center).
Formulation:	PBS with 0.09% (W/V) sodium azide State: Aff - Purified State: Liquid Ig fraction
Concentration:	lot specific
Purification:	Protein A column followed by peptide affinity purification
Conjugation:	Unconjugated
Storage:	Store undiluted at 2-8°C for one month or (in aliquots) at -20°C for longer. Avoid repeated freezing and thawing.
Stability:	Shelf life: one year from despatch.
Gene Name:	zinc finger protein 263
Database Link:	<a href="#">Entrez Gene 10127 Human O14978</a>
Background:	ZNF263 might play an important role in basic cellular processes as a transcriptional repressor.
Synonyms:	Zinc finger protein 263, FPM315, ZKSCAN12
Note:	<b>Molecular Weight:</b> 77299 Da



[View online »](#)

Protein Families: Transcription Factors

### Product images:



ZNF263 Antibody (Center) western blot analysis in SK-BR-3 cell line lysates (35 ug/lane). This demonstrates the ZNF263 antibody detected the ZNF263 protein (arrow).