

Product datasheet for **AP54681PU-N**

ZNF259 (ZPR1) (C-term) Rabbit Polyclonal Antibody

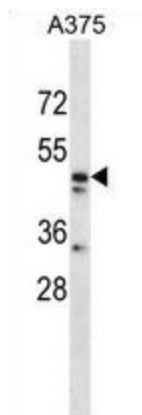
Product data:

Product Type:	Primary Antibodies
Applications:	WB
Recommended Dilution:	ELISA: 1:1;000. Western blot: 1:100~500.
Reactivity:	Human, Mouse
Host:	Rabbit
Isotype:	Ig
Clonality:	Polyclonal
Immunogen:	KLH conjugated synthetic peptide between 404-434 amino acids from the C-terminal region of human ZNF259
Specificity:	This antibody detects ZNF259 (C-term).
Formulation:	PBS with 0.09% (W/V) sodium azide State: Aff - Purified State: Liquid Ig fraction
Concentration:	lot specific
Purification:	Protein A column followed by peptide affinity purification
Conjugation:	Unconjugated
Storage:	Store at 2 - 8 °C for up to six months or (in aliquots) at -20 °C for longer. Avoid repeated freezing and thawing.
Stability:	Shelf life: one year from despatch.
Gene Name:	ZPR1 zinc finger
Database Link:	Entrez Gene 22687 Mouse Entrez Gene 8882 Human O75312
Background:	ZNF259 may be a signaling molecule that communicates mitogenic signals from the cytoplasm to the nucleus.
Synonyms:	Zinc finger protein 259, ZPR1
Note:	Molecular Weight: 50925 Da

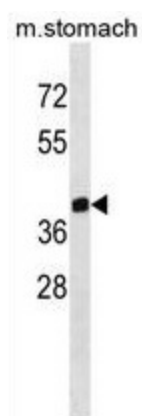


[View online »](#)

Product images:



ZNF259 Antibody (C-term) western blot analysis in A375 cell line lysates (35 ug/lane). This demonstrates the ZNF259 antibody detected the ZNF259 protein (arrow).



ZNF259 Antibody (C-term) western blot analysis in mouse stomach tissue lysates (35 ug/lane). This demonstrates the ZNF259 antibody detected the ZNF259 protein (arrow).