

Product datasheet for **AP54679PU-N**

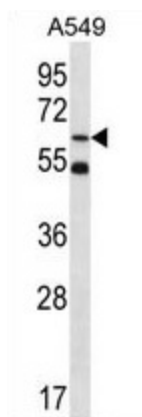
ZNF248 (Center) Rabbit Polyclonal Antibody

Product data:

Product Type:	Primary Antibodies
Applications:	WB
Recommended Dilution:	ELISA: 1:1;000. Western blot: 1:100~500.
Reactivity:	Human
Host:	Rabbit
Isotype:	Ig
Clonality:	Polyclonal
Immunogen:	KLH conjugated synthetic peptide between 275-304 amino acids from the Central region of human ZNF248
Specificity:	This antibody detects ZNF248 (Center).
Formulation:	PBS with 0.09% (W/V) sodium azide State: Aff - Purified State: Liquid Ig fraction
Concentration:	lot specific
Purification:	Protein A column followed by peptide affinity purification
Conjugation:	Unconjugated
Storage:	Store at 2 - 8 °C for up to six months or (in aliquots) at -20 °C for longer. Avoid repeated freezing and thawing.
Stability:	Shelf life: one year from despatch.
Gene Name:	zinc finger protein 248
Database Link:	Entrez Gene 57209 Human Q8NDW4
Background:	ZNF248 may be involved in transcriptional regulation.
Synonyms:	Zinc finger protein 248
Note:	Molecular Weight: 67087 Da
Protein Families:	Transcription Factors



[View online »](#)

Product images:

ZNF248 Antibody (Center) western blot analysis in A549 cell line lysates (35 ug/lane). This demonstrates the ZNF248 antibody detected the ZNF248 protein (arrow).