

## Product datasheet for **AP54677PU-N**

### ZNF217 (N-term) Rabbit Polyclonal Antibody

#### Product data:

Product Type:	Primary Antibodies
Applications:	WB
Recommended Dilution:	<b>ELISA:</b> 1/1000. <b>Western blot:</b> 1/100-1/500.
Reactivity:	Human
Host:	Rabbit
Isotype:	Ig
Clonality:	Polyclonal
Immunogen:	KLH conjugated synthetic peptide between 91-120 amino acids from the N-terminal region of Human ZNF217.
Specificity:	This antibody detects ZNF217 at N-term.
Formulation:	PBS State: Aff - Purified State: Liquid purified Ig fraction Preservative: 0.09% (W/V) Sodium Azide
Concentration:	lot specific
Purification:	Peptide Affinity Chromatography on Protein A
Conjugation:	Unconjugated
Storage:	Store the antibody undiluted at 2-8°C for one month or (in aliquots) at -20°C for longer. Avoid repeated freezing and thawing.
Stability:	Shelf life: one year from despatch.
Gene Name:	zinc finger protein 217
Database Link:	<a href="#">Entrez Gene 7764 Human O75362</a>
Background:	ZNF217 binds to the promoters of target genes and functions as repressor. Promotes cell proliferation and antagonizes cell death. Promotes phosphorylation of AKT1 at 'Ser-473'.
Synonyms:	Zinc finger protein 217, ZABC1

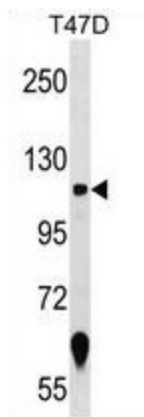


[View online »](#)

Note: **Molecular Weight:** 115272 Da

Protein Families: Transcription Factors

### Product images:



Western blot analysis in T47D cell line lysates (35 ug/lane) using ZNF217 Antibody (N-term). This demonstrates the ZNF217 antibody detected the ZNF217 protein (arrow).