

Product datasheet for **AP54672PU-N**

ZNF165 (Center) Rabbit Polyclonal Antibody

Product data:

Product Type:	Primary Antibodies
Applications:	WB
Recommended Dilution:	ELISA: 1:1;000. Western blot: 1:100~500.
Reactivity:	Human
Host:	Rabbit
Isotype:	Ig
Clonality:	Polyclonal
Immunogen:	Immunized with a KLH conjugated synthetic peptide between 215-242 amino acids from the Central region of human ZNF165
Specificity:	This antibody detects ZNF165 (Center).
Formulation:	PBS with 0.09% (W/V) sodium azide State: Aff - Purified State: Liquid Ig fraction
Concentration:	lot specific
Purification:	Protein A column followed by peptide affinity purification
Conjugation:	Unconjugated
Storage:	Store at 2 - 8 °C for up to six months or (in aliquots) at -20 °C for longer. Avoid repeated freezing and thawing.
Stability:	Shelf life: one year from despatch.
Gene Name:	zinc finger protein 165
Database Link:	Entrez Gene 7718 Human P49910
Background:	This gene encodes a member of the Kruppel family of zinc finger proteins. Members of this DNA-binding protein family act as transcriptional regulators. This gene is located within a cluster of zinc finger family members. The encoded protein may play a role in spermatogenesis.
Synonyms:	Zinc finger protein 165, ZPF165, LD65, ZSCAN7

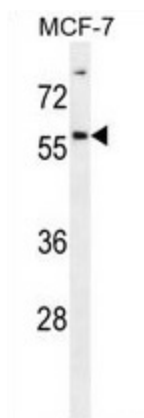


[View online »](#)

Note: **Molecular Weight:** 55771 Da

Protein Families: Stem cell - Pluripotency, Transcription Factors

Product images:



ZNF165 Antibody (Center) (AP54672PU-N) western blot analysis in MCF-7 cell line lysates (35 ug/lane). This demonstrates the ZNF165 antibody detected the ZNF165 protein (arrow).