

## Product datasheet for **AP54671PU-N**

### ZNF146 (N-term) Rabbit Polyclonal Antibody

#### Product data:

Product Type:	Primary Antibodies
Applications:	WB
Recommended Dilution:	ELISA: 1:1;000. Western blot: 1:100~500.
Reactivity:	Human, Mouse
Host:	Rabbit
Isotype:	Ig
Clonality:	Polyclonal
Immunogen:	KLH conjugated synthetic peptide between 24-54 amino acids from the N-terminal region of human ZNF146
Specificity:	This antibody detects ZNF146 (N-term).
Formulation:	PBS with 0.09% (W/V) sodium azide State: Aff - Purified State: Liquid Ig fraction
Concentration:	lot specific
Purification:	Protein A column followed by peptide affinity purification
Conjugation:	Unconjugated
Storage:	Store at 2 - 8 °C for up to six months or (in aliquots) at -20 °C for longer. Avoid repeated freezing and thawing.
Stability:	Shelf life: one year from despatch.
Gene Name:	zinc finger protein 146
Database Link:	<a href="#">Entrez Gene 7705 Human Q15072</a>



[View online »](#)

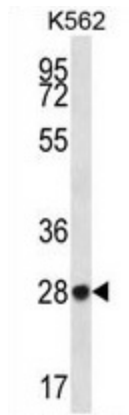
**Background:** The ZNF146 protein is a 33 kDa Kruppel protein, composed solely of 10 zinc finger motifs. ZNF146 overexpression in tumours may alter the balance between hRap1 and other telomeric proteins; therefore ZNF146 function may be linked to telomere regulation. ZNF146 is strongly overexpressed in many pancreas and colorectal cancers. Increased gene copy numbers are detected in 3 of 12 tumor cell lines and 2 of 12 primary pancreatic carcinomas. ZNF146 is overexpressed in 80% of colorectal cancers.

**Synonyms:** Only zinc finger protein, Zinc finger protein 146

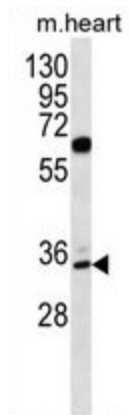
**Note:** **Molecular Weight:** 33308 Da

**Protein Families:** Transcription Factors

**Product images:**



ZNF146 Antibody (N-term) western blot analysis in K562 cell line lysates (35 ug/lane). This demonstrates the ZNF146 antibody detected the ZNF146 protein (arrow).



ZNF146 Antibody (N-term) western blot analysis in mouse heart tissue lysates (35 ug/lane). This demonstrates the ZNF146 antibody detected the ZNF146 protein (arrow).