

## Product datasheet for **AP54670PU-N**

### ZNF136 (N-term) Rabbit Polyclonal Antibody

#### Product data:

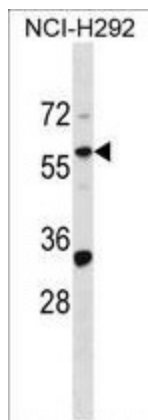
Product Type:	Primary Antibodies
Applications:	WB
Recommended Dilution:	ELISA: 1:1;000. Western blot: 1:100~500.
Reactivity:	Human
Host:	Rabbit
Isotype:	Ig
Clonality:	Polyclonal
Immunogen:	KLH conjugated synthetic peptide between 103-133 amino acids from the N-terminal region of human ZNF136
Specificity:	This antibody detects ZNF136 (N-term).
Formulation:	PBS with 0.09% (W/V) sodium azide State: Aff - Purified State: Liquid Ig fraction
Concentration:	lot specific
Purification:	Protein A column followed by peptide affinity purification
Conjugation:	Unconjugated
Storage:	Store at 2 - 8 °C for up to six months or (in aliquots) at -20 °C for longer. Avoid repeated freezing and thawing.
Stability:	Shelf life: one year from despatch.
Gene Name:	zinc finger protein 136
Database Link:	<a href="#">Entrez Gene 7695 Human P52737</a>
Background:	ZNF136 may be involved in transcriptional regulation as a weak repressor when alone, or a potent one when fused with a heterologous protein containing a KRAB B-domain.
Synonyms:	Zinc finger protein 136
Note:	<b>Molecular Weight:</b> 62784 Da



[View online »](#)

Protein Families: Transcription Factors

### Product images:



ZNF136 Antibody (N-term) western blot analysis in NCI-H292 cell line lysates (35 ug/lane). This demonstrates the ZNF136 antibody detected the ZNF136 protein (arrow).