

## Product datasheet for **AP54666PU-N**

### ZNF673 (KRBOX4) (C-term) Rabbit Polyclonal Antibody

#### Product data:

Product Type:	Primary Antibodies
Applications:	WB
Recommended Dilution:	ELISA: 1:1;000. Western blot: 1:100~500.
Reactivity:	Human
Host:	Rabbit
Isotype:	Ig
Clonality:	Polyclonal
Immunogen:	KLH conjugated synthetic peptide between 95-125 amino acids from the C-terminal region of human ZNF673
Specificity:	This antibody detects ZNF673 (C-term).
Formulation:	PBS with 0.09% (W/V) sodium azide State: Aff - Purified State: Liquid Ig fraction
Concentration:	lot specific
Purification:	Protein A column followed by peptide affinity purification
Conjugation:	Unconjugated
Storage:	Store at 2 - 8 °C for up to six months or (in aliquots) at -20 °C for longer. Avoid repeated freezing and thawing.
Stability:	Shelf life: one year from despatch.
Gene Name:	KRAB box domain containing 4
Database Link:	<a href="#">Entrez Gene 55634 Human Q5JUW0</a>



[View online »](#)

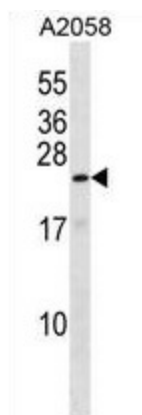
**Background:** ZNF673 belongs to the krueppel C2H2-type zinc-finger protein family. ZNF673 may be involved in transcriptional regulation. Defects in ZNF673 may be the cause of mental retardation X-linked type 92 (MRX92). Mental retardation is characterized by significantly sub-average general intellectual functioning associated with impairments in adaptive behavior and manifested during the developmental period. Non-syndromic mental retardation patients do not manifest other clinical signs.

**Synonyms:** Protein ZNF673

**Note:** **Molecular Weight:** 20100 Da

**Protein Families:** Transcription Factors

### Product images:



ZNF673 Antibody (C-term) western blot analysis in A2058 cell line lysates (35 ug/lane). This demonstrates the ZNF673 antibody detected the ZNF673 protein (arrow).