

Product datasheet for **AP54657PU-N**

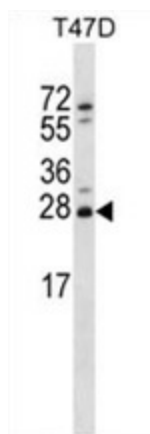
ZMAT2 (C-term) Rabbit Polyclonal Antibody

Product data:

Product Type:	Primary Antibodies
Applications:	WB
Recommended Dilution:	ELISA: 1:1;000. Western blot: 1:100~500.
Reactivity:	Human
Host:	Rabbit
Isotype:	Ig
Clonality:	Polyclonal
Immunogen:	KLH conjugated synthetic peptide between 161-190 amino acids from the C-terminal region of human ZMAT2
Specificity:	This antibody detects ZMAT2 (C-term).
Formulation:	PBS with 0.09% (W/V) sodium azide State: Aff - Purified State: Liquid Ig fraction
Concentration:	lot specific
Purification:	Protein A column followed by peptide affinity purification.
Conjugation:	Unconjugated
Storage:	Store at 2 - 8 °C for up to six months or (in aliquots) at -20 °C for longer. Avoid repeated freezing and thawing.
Stability:	Shelf life: one year from despatch.
Gene Name:	zinc finger matrin-type 2
Database Link:	Entrez Gene 153527 Human Q96NC0
Background:	Zmat2 contains 1 matrin type zinc finger.
Synonyms:	FLJ31121
Note:	Molecular Weight: 23612 Da
Protein Pathways:	Spliceosome



[View online »](#)

Product images:

ZMAT2 Antibody (C-term) western blot analysis in T47D cell line lysates (35 ug/lane). This demonstrates the ZMAT2 antibody detected the ZMAT2 protein (arrow).