

Product datasheet for **AP54656PU-N**

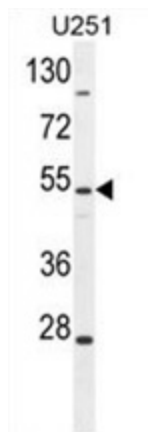
ZIK1 (Center) Rabbit Polyclonal Antibody

Product data:

Product Type:	Primary Antibodies
Applications:	WB
Recommended Dilution:	ELISA: 1:1;000. Western blot: 1:100~500.
Reactivity:	Human
Host:	Rabbit
Isotype:	Ig
Clonality:	Polyclonal
Immunogen:	KLH conjugated synthetic peptide between 193-224 amino acids from the Central region of human ZIK1
Specificity:	This antibody detects ZIK1 (Center).
Formulation:	PBS with 0.09% (W/V) sodium azide State: Aff - Purified State: Liquid Ig fraction
Concentration:	lot specific
Purification:	Protein A column; followed by peptide affinity purification
Conjugation:	Unconjugated
Storage:	Store at 2 - 8 °C for up to six months or (in aliquots) at -20 °C for longer. Avoid repeated freezing and thawing.
Stability:	Shelf life: one year from despatch.
Gene Name:	zinc finger protein interacting with K protein 1
Database Link:	Entrez Gene 284307 Human Q3SY52
Background:	May be a transcriptional repressor (By similarity).
Synonyms:	ZNF762
Note:	Molecular Weight: 54786 Da



[View online »](#)

Product images:

ZIK1 Antibody (Center) western blot analysis in U251 cell line lysates (35 ug/lane). This demonstrates the ZIK1 antibody detected the ZIK1 protein (arrow).