

Product datasheet for **AP54655PU-N**

ZIC1 (N-term) Rabbit Polyclonal Antibody

Product data:

Product Type:	Primary Antibodies
Applications:	WB
Recommended Dilution:	ELISA: 1:1;000. Western blot: 1:100~500.
Reactivity:	Human
Host:	Rabbit
Isotype:	Ig
Clonality:	Polyclonal
Immunogen:	KLH conjugated synthetic peptide between 5-34 amino acids from the N-terminal region of human ZIC1
Specificity:	This antibody detects ZIC1 (N-term).
Formulation:	PBS with 0.09% (W/V) sodium azide State: Aff - Purified State: Liquid Ig fraction
Concentration:	lot specific
Purification:	Protein A column followed by peptide affinity purification
Conjugation:	Unconjugated
Storage:	Store at 2 - 8 °C for up to six months or (in aliquots) at -20 °C for longer. Avoid repeated freezing and thawing.
Stability:	Shelf life: one year from despatch.
Gene Name:	Zic family member 1
Database Link:	Entrez Gene 7545 Human Q15915
Background:	This gene encodes a member of the ZIC family of C2H2-type zinc finger proteins. Members of this family are important during development. Aberrant expression of this gene is seen in medulloblastoma, a childhood brain tumor. This gene is closely linked to the gene encoding zinc finger protein of the cerebellum 4, a related family member on chromosome 3. This gene encodes a transcription factor that can bind and transactivate the apolipoprotein E gene.



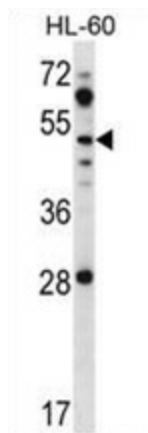
[View online »](#)

Synonyms: ZIC

Note: **Molecular Weight:** 48309 Da

Protein Families: Druggable Genome

Product images:



ZIC1 Antibody (N-term) western blot analysis in HL-60 cell line lysates (35 ug/lane). This demonstrates the ZIC1 antibody detected the ZIC1 protein (arrow).