

Product datasheet for **AP54652PU-N**

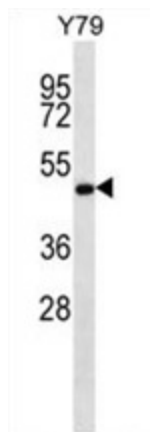
ZFYVE19 (C-term) Rabbit Polyclonal Antibody

Product data:

Product Type:	Primary Antibodies
Applications:	WB
Recommended Dilution:	ELISA: 1:1;000. Western blot: 1:100~500.
Reactivity:	Human
Host:	Rabbit
Isotype:	Ig
Clonality:	Polyclonal
Immunogen:	KLH conjugated synthetic peptide between 386-415 amino acids from the C-terminal region of human ZFYVE19
Specificity:	This antibody detects ZFYVE19 (C-term).
Formulation:	PBS with 0.09% (W/V) sodium azide State: Aff - Purified State: Liquid Ig fraction
Concentration:	lot specific
Purification:	Protein A column followed by peptide affinity purification
Conjugation:	Unconjugated
Storage:	Store at 2 - 8 °C for up to six months or (in aliquots) at -20 °C for longer. Avoid repeated freezing and thawing.
Stability:	Shelf life: one year from despatch.
Gene Name:	zinc finger FYVE-type containing 19
Database Link:	Entrez Gene 84936 Human Q96K21
Synonyms:	MPFYVE
Note:	Molecular Weight: 51546 Da



[View online »](#)

Product images:

ZFYVE19 Antibody (C-term) western blot analysis in Y79 cell line lysates (35 ug/lane). This demonstrates the ZFYVE19 antibody detected the ZFYVE19 protein (arrow).