

Product datasheet for **AP54651PU-N**

ZFYVE1 (N-term) Rabbit Polyclonal Antibody

Product data:

Product Type:	Primary Antibodies
Applications:	WB
Recommended Dilution:	ELISA: 1:1;000. Western blot: 1:100~500.
Reactivity:	Human
Host:	Rabbit
Isotype:	Ig
Clonality:	Polyclonal
Immunogen:	KLH conjugated synthetic peptide between 144-173 amino acids from the N-terminal region of human ZFYVE1
Specificity:	This antibody detects ZFYVE1 (N-term).
Formulation:	PBS with 0.09% (W/V) sodium azide State: Aff - Purified State: Liquid Ig fraction
Concentration:	lot specific
Purification:	Protein A column followed by peptide affinity purification
Conjugation:	Unconjugated
Storage:	Store at 2 - 8 °C for up to six months or (in aliquots) at -20 °C for longer. Avoid repeated freezing and thawing.
Stability:	Shelf life: one year from despatch.
Gene Name:	zinc finger FYVE-type containing 1
Database Link:	Entrez Gene 53349 Human Q9HBF4



[View online »](#)

Background:

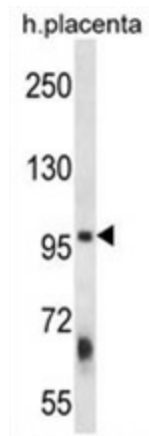
The FYVE domain mediates the recruitment of proteins involved in membrane trafficking and cell signaling to phosphatidylinositol 3-phosphate (PtdIns(3)P)-containing membranes. This gene encodes a protein which contains two zinc-binding FYVE domains in tandem. This protein displays a predominantly Golgi, endoplasmic reticulum and vesicular distribution. Alternatively spliced transcript variants have been found for this gene, and they encode two isoforms with different sizes.

Synonyms:

DFCP1, KIAA1589, TAFF1, ZNFN2A1, SR3, PP10436

Note:

Molecular Weight: 87176 Da

Product images:

ZFYVE1 Antibody (N-term) western blot analysis in human placenta tissue lysates (35 ug/lane). This demonstrates the ZFYVE1 antibody detected the ZFYVE1 protein (arrow).