

Product datasheet for **AP54650PU-N**

ZFY (Center) Rabbit Polyclonal Antibody

Product data:

Product Type:	Primary Antibodies
Applications:	WB
Recommended Dilution:	ELISA: 1:1;000. Western blot: 1:100~500.
Reactivity:	Human
Host:	Rabbit
Isotype:	Ig
Clonality:	Polyclonal
Immunogen:	KLH conjugated synthetic peptide between 322-351 amino acids from the Central region of human ZFY
Specificity:	This antibody detects ZFY (Center).
Formulation:	PBS with 0.09% (W/V) sodium azide State: Aff - Purified State: Liquid Ig fraction
Concentration:	lot specific
Purification:	Protein A column followed by peptide affinity purification
Conjugation:	Unconjugated
Storage:	Store at 2 - 8 °C for up to six months or (in aliquots) at -20 °C for longer. Avoid repeated freezing and thawing.
Stability:	Shelf life: one year from despatch.
Gene Name:	zinc finger protein, Y-linked
Database Link:	Entrez Gene 7544 Human P08048
Background:	This gene encodes a zinc finger-containing protein that may function as a transcription factor. This gene was once a candidate gene for the testis-determining factor (TDF) and was erroneously referred to as TDF.
Synonyms:	MGC138710; OTTHUMP00000034366

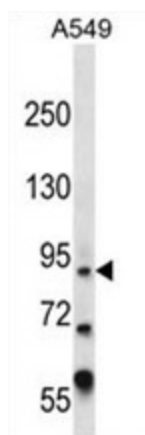


[View online »](#)

Note: **Molecular Weight:** 90505 Da

Protein Families: Transcription Factors

Product images:



ZFY Antibody (Center) western blot analysis in A549 cell line lysates (35 ug/lane). This demonstrates the ZFY antibody detected the ZFY protein (arrow).