

Product datasheet for **AP54648PU-N**

FOG2 (ZFPM2) (C-term) Rabbit Polyclonal Antibody

Product data:

Product Type:	Primary Antibodies
Applications:	WB
Recommended Dilution:	ELISA: 1:1;000. Western blot: 1:100~500.
Reactivity:	Human
Host:	Rabbit
Isotype:	Ig
Clonality:	Polyclonal
Immunogen:	KLH conjugated synthetic peptide between 882-911 amino acids from the C-terminal region of human ZFPM2
Specificity:	This antibody detects ZFPM2 / FOG2 (C-term).
Formulation:	PBS with 0.09% (W/V) sodium azide State: Aff - Purified State: Liquid Ig fraction
Concentration:	lot specific
Purification:	Protein A column followed by peptide affinity purification
Conjugation:	Unconjugated
Storage:	Store at 2 - 8 °C for up to six months or (in aliquots) at -20 °C for longer. Avoid repeated freezing and thawing.
Stability:	Shelf life: one year from despatch.
Gene Name:	zinc finger protein, FOG family member 2
Database Link:	Entrez Gene 23414 Human Q8WW38



[View online »](#)

Background:

The zinc finger protein encoded by this gene is a widely expressed member of the FOG family of transcription factors. The family members modulate the activity of GATA family proteins, which are important regulators of hematopoiesis and cardiogenesis in mammals. It has been demonstrated that the protein can both activate and down-regulate expression of GATA-target genes, suggesting different modulation in different promoter contexts. A related mRNA suggests an alternatively spliced product but this information is not yet fully supported by the sequence. [provided by RefSeq].

Synonyms:

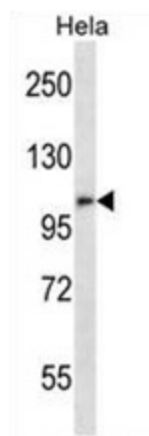
ZNF89B, FOG-2

Note:

Molecular Weight: 128159 Da

Protein Families:

Transcription Factors

Product images:

ZFPM2 Antibody (C-term) western blot analysis in HeLa cell line lysates (35 ug/lane). This demonstrates the ZFPM2 antibody detected the ZFPM2 protein (arrow).