

Product datasheet for **AP54647PU-N**

ZFP91 (Center) Rabbit Polyclonal Antibody

Product data:

Product Type:	Primary Antibodies
Applications:	WB
Recommended Dilution:	ELISA: 1:1;000. Western blot: 1:100~500.
Reactivity:	Human
Host:	Rabbit
Isotype:	Ig
Clonality:	Polyclonal
Immunogen:	KLH conjugated synthetic peptide between 223-253 amino acids from the Central region of human ZFP91
Specificity:	This antibody detects ZFP91 (Center).
Formulation:	PBS with 0.09% (W/V) sodium azide State: Aff - Purified State: Liquid Ig fraction
Concentration:	lot specific
Purification:	Protein A column followed by peptide affinity purification
Conjugation:	Unconjugated
Storage:	Store at 2 - 8 °C for up to six months or (in aliquots) at -20 °C for longer. Avoid repeated freezing and thawing.
Stability:	Shelf life: one year from despatch.
Gene Name:	ZFP91 zinc finger protein
Database Link:	Entrez Gene 80829 Human Q96JP5



[View online »](#)

Background:

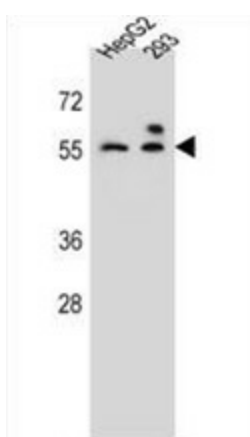
The protein encoded by this gene is a member of the zinc finger family of proteins. The gene product contains C2H2-type domains, which are the classical zinc finger domains found in numerous nucleic acid-binding proteins. This protein functions as a regulator of the non-canonical NF-kappaB pathway in lymphotoxin-beta receptor signaling. Alternative splicing results in multiple transcript variants. A read-through transcript variant composed of ZFP91 and the downstream CNTF gene sequence has been identified, but it is thought to be non-coding. Read-through transcription of ZFP91 and CNTF has also been observed in mouse. A ZFP91-related pseudogene has also been identified on chromosome 2.

Synonyms:

Zfp-91, FKSG11

Note:**Molecular Weight:** 63445 Da**Protein Families:**

Transcription Factors

Product images:

ZFP91 Antibody (Center) western blot analysis in HepG2, 293 cell line lysates (35 ug/lane). This demonstrates the ZFP91 antibody detected the ZFP91 protein (arrow).