

## Product datasheet for **AP54643PU-N**

### ZFP14 (N-term) Rabbit Polyclonal Antibody

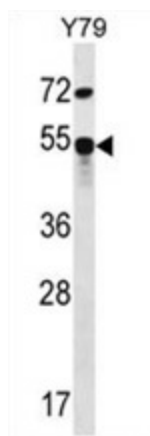
#### Product data:

Product Type:	Primary Antibodies
Applications:	WB
Recommended Dilution:	ELISA: 1:1;000. Western blot: 1:100~500.
Reactivity:	Human
Host:	Rabbit
Isotype:	Ig
Clonality:	Polyclonal
Immunogen:	KLH conjugated synthetic peptide between 71-100 amino acids from the N-terminal region of human ZFP14
Specificity:	This antibody detects ZFP14 (N-term).
Formulation:	PBS with 0.09% (W/V) sodium azide State: Aff - Purified State: Liquid Ig fraction
Concentration:	lot specific
Purification:	Protein A column followed by peptide affinity purification
Conjugation:	Unconjugated
Storage:	Store at 2 - 8 °C for up to six months or (in aliquots) at -20 °C for longer. Avoid repeated freezing and thawing.
Stability:	Shelf life: one year from despatch.
Gene Name:	ZFP14 zinc finger protein
Database Link:	<a href="#">Entrez Gene 57677 Human Q9HCL3</a>
Background:	ZFP14 may be involved in transcriptional regulation.
Synonyms:	Zfp-14, KIAA1559, ZNF531
Note:	<b>Molecular Weight:</b> 63463 Da



[View online »](#)

## Product images:



ZFP14 Antibody (N-term) western blot analysis in Y79 cell line lysates (35 ug/lane). This demonstrates the ZFP14 antibody detected the ZFP14 protein (arrow).