

## Product datasheet for **AP54642PU-N**

### Smad Interacting Protein 1 (ZEB2) (C-term) Rabbit Polyclonal Antibody

#### Product data:

Product Type:	Primary Antibodies
Applications:	FC, WB
Recommended Dilution:	ELISA: 1:1;000. Western blot: 1:100~500. Flow cytometry: 1:10~50.
Reactivity:	Human
Host:	Rabbit
Isotype:	Ig
Clonality:	Polyclonal
Immunogen:	Immunized with a KLH conjugated synthetic peptide between 1078-1105 amino acids from the C-terminal region of human ZEB2
Specificity:	This antibody detects ZFH1B (C-term).
Formulation:	Purified polyclonal antibody supplied in PBS with 0.09% (W/V) sodium azide. This antibody is purified through a protein A column; followed by peptide affinity purification. State: Aff - Purified
Concentration:	lot specific
Conjugation:	Unconjugated
Storage:	Store at 2 - 8 °C for up to six months or (in aliquots) at -20 °C for longer. Avoid repeated freezing and thawing.
Stability:	Shelf life: one year from despatch.
Gene Name:	zinc finger E-box binding homeobox 2
Database Link:	<a href="#">Entrez Gene 9839 Human O60315</a>
Background:	The protein encoded by this gene is a member of the Zfh1 family of 2-handed zinc finger/homeodomain proteins. It is located in the nucleus and functions as a DNA-binding transcriptional repressor that interacts with activated SMADs. Mutations in this gene are associated with Hirschsprung disease/Mowat-Wilson syndrome. Alternatively spliced transcript variants have been found for this gene.



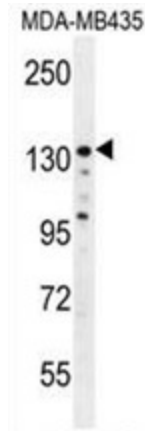
[View online »](#)

**Synonyms:** ZFX1B, ZEB2, SMADIP1, SIP1, KIAA0569

**Note:** **Molecular Weight:** 136447 Da

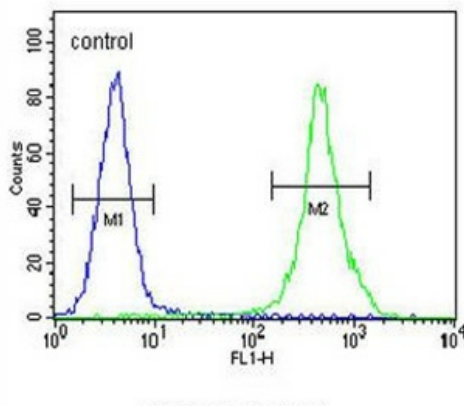
**Protein Families:** Druggable Genome, Transcription Factors

**Product images:**



ZEB2 Antibody (C-term) (AP54642PU-N) western blot analysis in MDA-MB435 cell line lysates (35 ug/lane). This demonstrates the ZEB2 antibody detected the ZEB2 protein (arrow).

**MDA-MB435**



ZEB2 Antibody (C-term) (AP54642PU-N) flow cytometric analysis of MDA-MB435 cells (right histogram) compared to a negative control cell (left histogram). FITC-conjugated goat-anti-rabbit secondary antibodies were used for the analysis.