

Product datasheet for **AP54641PU-N**

ZDHHC9 (C-term) Rabbit Polyclonal Antibody

Product data:

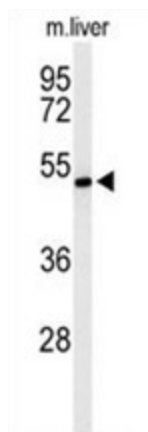
Product Type:	Primary Antibodies
Applications:	IHC, WB
Recommended Dilution:	ELISA: 1:1;000. Western blot: 1:100~500. Immunohistochemistry on paraffin sections: 1:50~100.
Reactivity:	Human, Mouse
Host:	Rabbit
Isotype:	Ig
Clonality:	Polyclonal
Immunogen:	KLH conjugated synthetic peptide between 335~364 amino acids from the C-terminal region of human ZDHHC9
Specificity:	This antibody detects ZDHHC9 (C-term).
Formulation:	PBS with 0.09% (W/V) sodium azide State: Aff - Purified State: Liquid Ig fraction
Concentration:	lot specific
Purification:	Protein A column followed by peptide affinity purification
Conjugation:	Unconjugated
Storage:	Store at 2 - 8 °C for up to six months or (in aliquots) at -20 °C for longer. Avoid repeated freezing and thawing.
Stability:	Shelf life: one year from despatch.
Gene Name:	zinc finger DHHC-type containing 9
Database Link:	Entrez Gene 208884 Mouse Entrez Gene 51114 Human Q9Y397
Background:	The ZDHHC9-GOLGA7 complex is a palmitoyltransferase specific for HRAS and NRAS.
Synonyms:	DHHC-9, DHHC9, ZNF379, CXorf11, ZDHHC10, CGI-89, UNQ261/PRO298
Note:	Molecular Weight: 40916 Da



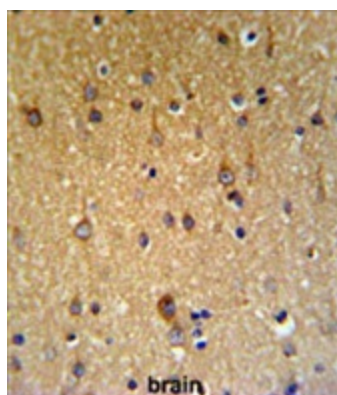
[View online »](#)

Protein Families: Transmembrane

Product images:



Western blot analysis of ZDHHC9 Antibody (C-term) in mouse liver tissue lysates (35 ug/lane). ZDHHC9 (arrow) was detected using the purified Pab.



ZDHHC9 Antibody (C-term) IHC analysis in formalin fixed and paraffin embedded brain tissue followed by peroxidase conjugation of the secondary antibody and DAB staining. This data demonstrates the use of the ZDHHC9 Antibody (C-term) for immunohistochemistry. Clinical relevance has not been evaluated.