

## Product datasheet for **AP54640PU-N**

### ZDHHC8 (C-term) Rabbit Polyclonal Antibody

#### Product data:

Product Type:	Primary Antibodies
Applications:	WB
Recommended Dilution:	ELISA: 1:1;000. Western blot: 1:100~500.
Reactivity:	Human, Mouse
Host:	Rabbit
Isotype:	Ig
Clonality:	Polyclonal
Immunogen:	KLH conjugated synthetic peptide between 531-561 amino acids from the C-terminal region of human ZDHHC8
Specificity:	This antibody detects ZDHHC8 (C-term).
Formulation:	PBS with 0.09% (W/V) sodium azide State: Aff - Purified State: Liquid Ig fraction
Concentration:	lot specific
Purification:	Protein A column followed by peptide affinity purification
Conjugation:	Unconjugated
Storage:	Store at 2 - 8 °C for up to six months or (in aliquots) at -20 °C for longer. Avoid repeated freezing and thawing.
Stability:	Shelf life: one year from despatch.
Gene Name:	zinc finger DHHC-type containing 8
Database Link:	<a href="#">Entrez Gene 27801 Mouse</a> <a href="#">Entrez Gene 29801 Human</a> <a href="#">Q9ULC8</a>
Background:	This gene encodes a four transmembrane protein that is a member of the zinc finger DHHC domain-containing protein family. The encoded protein may function as a palmitoyltransferase. Defects in this gene may be associated with a susceptibility to schizophrenia. Alternate splicing of this gene results in multiple transcript variants. A pseudogene of this gene is found on chromosome 22.



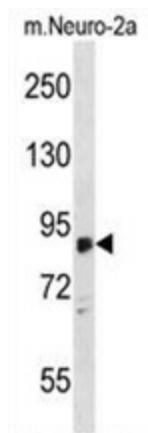
[View online »](#)

Synonyms: DHHC-8, ZNF378, KIAA1292, ZDHC1

Note: **Molecular Weight:** 81443 Da

Protein Families: Transmembrane

### Product images:



ZDHC8 Antibody (C-term) western blot analysis in mouse Neuro-2a cell line lysates (35 ug/lane). This demonstrates the ZDHC8 antibody detected the ZDHC8 protein (arrow).