

## Product datasheet for **AP54639PU-N**

### ZDHHC6 (C-term) Rabbit Polyclonal Antibody

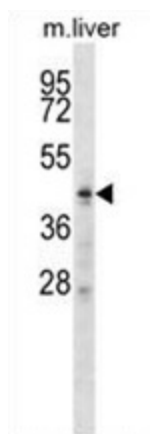
#### Product data:

Product Type:	Primary Antibodies
Applications:	WB
Recommended Dilution:	ELISA: 1:1;000. Western blot: 1:100~500.
Reactivity:	Human, Mouse
Host:	Rabbit
Isotype:	Ig
Clonality:	Polyclonal
Immunogen:	KLH conjugated synthetic peptide between 287-317 amino acids from the C-terminal region of human ZDHHC6
Specificity:	This antibody detects ZDHHC6 (C-term).
Formulation:	PBS with 0.09% (W/V) sodium azide State: Aff - Purified State: Liquid Ig fraction
Concentration:	lot specific
Purification:	Protein A column followed by peptide affinity purification
Conjugation:	Unconjugated
Storage:	Store at 2 - 8 °C for up to six months or (in aliquots) at -20 °C for longer. Avoid repeated freezing and thawing.
Stability:	Shelf life: one year from despatch.
Gene Name:	zinc finger DHHC-type containing 6
Database Link:	<a href="#">Entrez Gene 64429 Human Q9H6R6</a>
Synonyms:	DHHC-6, ZNF376
Note:	<b>Molecular Weight:</b> 47663 Da
Protein Families:	Transmembrane

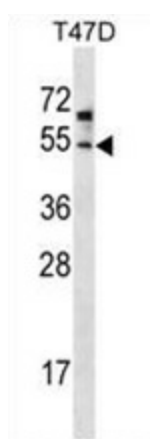


[View online »](#)

## Product images:



ZDHHC6 Antibody (C-term) western blot analysis in mouse liver tissue lysates (35 ug/lane). This demonstrates the ZDHHC6 antibody detected the ZDHHC6 protein (arrow).



ZDHHC6 Antibody (C-term) western blot analysis in T47D cell line lysates (35 ug/lane). This demonstrates the ZDHHC6 antibody detected the ZDHHC6 protein (arrow).