

Product datasheet for **AP54635PU-N**

ZDHHC13 (N-term) Rabbit Polyclonal Antibody

Product data:

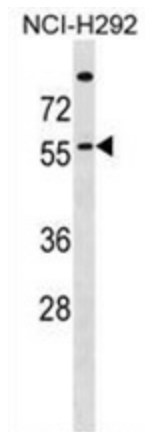
Product Type:	Primary Antibodies
Applications:	WB
Recommended Dilution:	ELISA: 1:1;000. Western blot: 1:100~500.
Reactivity:	Human
Host:	Rabbit
Isotype:	Ig
Clonality:	Polyclonal
Immunogen:	KLH conjugated synthetic peptide between 54-83 amino acids from the N-terminal region of human ZDHHC13
Specificity:	This antibody detects ZDHHC13 (N-term).
Formulation:	PBS with 0.09% (W/V) sodium azide State: Aff - Purified State: Liquid Ig fraction
Concentration:	lot specific
Purification:	Protein A column followed by peptide affinity purification
Conjugation:	Unconjugated
Storage:	Store at 2 - 8 °C for up to six months or (in aliquots) at -20 °C for longer. Avoid repeated freezing and thawing.
Stability:	Shelf life: one year from despatch.
Gene Name:	zinc finger DHHC-type containing 13
Database Link:	Entrez Gene 54503 Human Q8IUH4
Background:	ZDHHC13 is palmitoyltransferase for HD and GAD2 (By similarity). It mediates Mg(2+) transport (By similarity).
Synonyms:	HIP14L, HIP3RP, DHHC-13
Note:	Molecular Weight: 70861 Da



[View online »](#)

Protein Families: Transmembrane

Product images:



ZDHHC13 Antibody (N-term) western blot analysis in NCI-H292 cell line lysates (35 ug/lane). This demonstrates the ZDHHC13 antibody detected the ZDHHC13 protein (arrow).