

Product datasheet for **AP54634PU-N**

ZDHHC1 (N-term) Rabbit Polyclonal Antibody

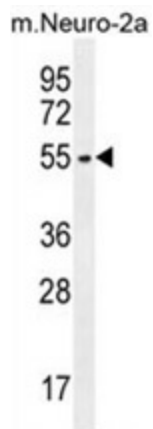
Product data:

Product Type:	Primary Antibodies
Applications:	WB
Recommended Dilution:	ELISA: 1:1;000. Western blot: 1:100~500.
Reactivity:	Human, Mouse
Host:	Rabbit
Isotype:	Ig
Clonality:	Polyclonal
Immunogen:	KLH conjugated synthetic peptide between 21-51 amino acids from the N-terminal region of human ZDHHC1
Specificity:	This antibody detects ZDHHC1 (N-term).
Formulation:	PBS with 0.09% (W/V) sodium azide State: Aff - Purified State: Liquid Ig fraction
Concentration:	lot specific
Purification:	Protein A column followed by peptide affinity purification
Conjugation:	Unconjugated
Storage:	Store at 2 - 8 °C for up to six months or (in aliquots) at -20 °C for longer. Avoid repeated freezing and thawing.
Stability:	Shelf life: one year from despatch.
Gene Name:	zinc finger DHHC-type containing 1
Database Link:	Entrez Gene 29800 Human Q8WTX9
Synonyms:	ZNF377, C16orf1, DHHC-1
Note:	Molecular Weight: 54818 Da
Protein Families:	Transmembrane



[View online »](#)

Product images:



ZDHHC1 Antibody (N-term) western blot analysis in mouse Neuro-2a cell line lysates (35 ug/lane). This demonstrates the ZDHHC1 antibody detected the ZDHHC1 protein (arrow).