

Product datasheet for **AP54633PU-N**

ZDHHC7 (C-term) Rabbit Polyclonal Antibody

Product data:

Product Type:	Primary Antibodies
Applications:	WB
Recommended Dilution:	ELISA: 1:1;000. Western blot: 1:100~500.
Reactivity:	Human
Host:	Rabbit
Isotype:	Ig
Clonality:	Polyclonal
Immunogen:	KLH conjugated synthetic peptide between 239-267 amino acids from the C-terminal region of human ZDHHC7
Specificity:	This antibody detects ZDHHC7 (C-term).
Formulation:	PBS with 0.09% (W/V) sodium azide State: Aff - Purified State: Liquid Ig fraction
Concentration:	lot specific
Purification:	Protein A column followed by peptide affinity purification
Conjugation:	Unconjugated
Storage:	Store at 2 - 8 °C for up to six months or (in aliquots) at -20 °C for longer. Avoid repeated freezing and thawing.
Stability:	Shelf life: one year from despatch.
Gene Name:	zinc finger DHHC-type containing 7
Database Link:	Entrez Gene 55625 Human Q9NXF8
Background:	Palmitoyltransferase with broad specificity. Palmitoylates SNAP25 and DLG4/PSD95. May palmitoylate GABA receptors on their gamma subunit (GABRG1, GABRG2 and GABRG3) and regulate their synaptic clustering and/or cell surface stability (By similarity).
Synonyms:	DHHC-7, ZNF370

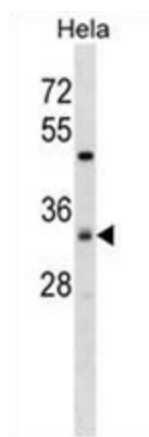


[View online »](#)

Note: **Molecular Weight:** 35140 Da

Protein Families: Transmembrane

Product images:



ZDHHC7 Antibody (C-term) western blot analysis in HeLa cell line lysates (35 ug/lane). This demonstrates the ZDHHC7 antibody detected the ZDHHC7 protein (arrow).