

Product datasheet for **AP54625PU-N**

ZCCHC17 (Center) Rabbit Polyclonal Antibody

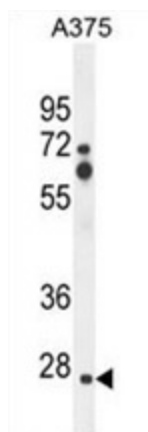
Product data:

Product Type:	Primary Antibodies
Applications:	WB
Recommended Dilution:	ELISA: 1:1;000. Western blot: 1:1000. FC: 1/10:1/50
Reactivity:	Human, Mouse
Host:	Rabbit
Isotype:	Ig
Clonality:	Polyclonal
Immunogen:	KLH conjugated synthetic peptide between 159-187 amino acids from the Central region of human ZCCHC17
Formulation:	PBS with 0.09% (W/V) sodium azide State: Aff - Purified State: Liquid Ig fraction
Concentration:	lot specific
Purification:	Protein A column followed by peptide affinity purification
Conjugation:	Unconjugated
Storage:	Store at 2 - 8 °C for up to six months or (in aliquots) at -20 °C for longer. Avoid repeated freezing and thawing.
Stability:	Shelf life: one year from despatch.
Gene Name:	zinc finger CCHC-type containing 17
Database Link:	Entrez Gene 619605 Mouse Entrez Gene 51538 Human Q9NP64
Synonyms:	PS1D, HSPC243, HSPC251, LDC4, pNO40
Note:	Molecular Weight: 27570 Da

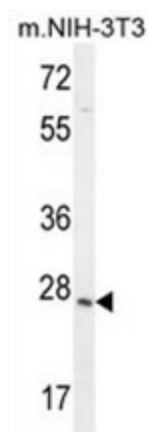


[View online »](#)

Product images:



ZCCHC17 Antibody (Center) western blot analysis in A375 cell line lysates (35 ug/lane). This demonstrates the ZCCHC17 antibody detected the ZCCHC17 protein (arrow).



ZCCHC17 Antibody (Center) western blot analysis in mouse NIH-3T3 cell line lysates (35 ug/lane). This demonstrates the ZCCHC17 antibody detected the ZCCHC17 protein (arrow).