

## Product datasheet for **AP54624PU-N**

### ZC4H2 (196-224) Rabbit Polyclonal Antibody

#### Product data:

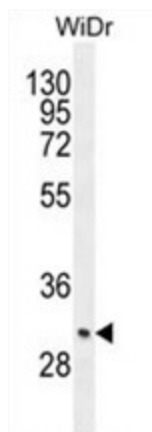
Product Type:	Primary Antibodies
Applications:	FC, IHC, WB
Recommended Dilution:	<b>Western blot:</b> 1:1000. <b>Immunohistochemistry on paraffin sections:</b> 1:50~100. <b>Flow cytometry:</b> 1:10~50.
Reactivity:	Human
Host:	Rabbit
Isotype:	Ig
Clonality:	Polyclonal
Immunogen:	KLH conjugated synthetic peptide between 196-224 amino acids from the C-terminal region of human ZC4H2
Specificity:	This antibody detects ZC4H2 (C-term).
Formulation:	PBS with 0.09% (W/V) sodium azide State: Aff - Purified State: Liquid Ig fraction
Concentration:	lot specific
Purification:	Protein A column followed by peptide affinity purification
Conjugation:	Unconjugated
Storage:	Store at 2 - 8 °C for up to six months or (in aliquots) at -20 °C for longer. Avoid repeated freezing and thawing.
Stability:	Shelf life: one year from despatch.
Gene Name:	zinc finger C4H2-type containing
Database Link:	<a href="#">Entrez Gene 55906 Human Q9NQZ6</a>
Background:	This protein contains a C4H2-type zinc finger and is thought to be involved in zinc ion binding. There are 3 isoforms produced by alternative splicing.
Synonyms:	HCA127, KIAA1166



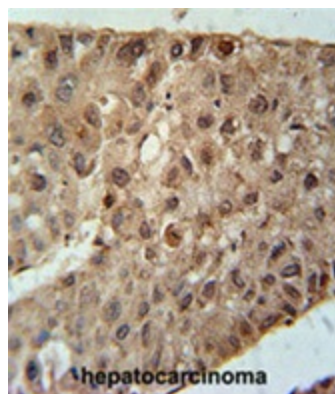
[View online »](#)

Note: **Molecular Weight:** 26244 Da

### Product images:



ZC4H2 Antibody (C-term) western blot analysis in WiDr cell line lysates (35 ug/lane). This demonstrates the ZC4H2 antibody detected the ZC4H2 protein (arrow).



ZC4H2 Antibody (C-term) immunohistochemistry analysis in formalin fixed and paraffin embedded human hepatocarcinoma followed by peroxidase conjugation of the secondary antibody and DAB staining. This data demonstrates the use of the ZC4H2 Antibody (C-term) for immunohistochemistry. Clinical relevance has not been evaluated.