

Product datasheet for **AP54621PU-N**

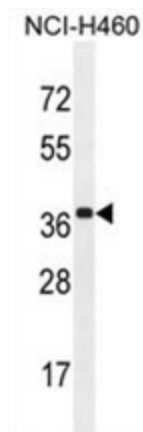
ZC3H15 (C-term) Rabbit Polyclonal Antibody

Product data:

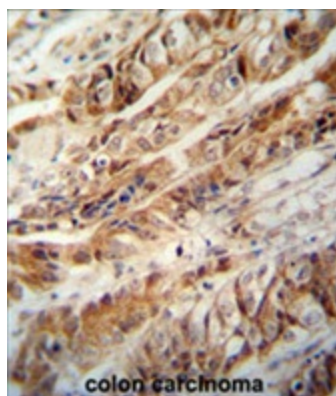
Product Type:	Primary Antibodies
Applications:	IHC, WB
Recommended Dilution:	ELISA: 1:1;000. Western blot: 1:100~500. Immunohistochemistry on paraffin sections: 1:50~100.
Reactivity:	Human
Host:	Rabbit
Isotype:	Ig
Clonality:	Polyclonal
Immunogen:	KLH conjugated synthetic peptide between 370-399 amino acids from the C-terminal region of human ZC3H15
Specificity:	This antibody detects ZC3H15 (C-term).
Formulation:	PBS with 0.09% (W/V) sodium azide State: Aff - Purified State: Liquid Ig fraction
Concentration:	lot specific
Purification:	Protein A column followed by peptide affinity purification
Conjugation:	Unconjugated
Storage:	Store at 2 - 8 °C for up to six months or (in aliquots) at -20 °C for longer. Avoid repeated freezing and thawing.
Stability:	Shelf life: one year from despatch.
Gene Name:	zinc finger CCCH-type containing 15
Database Link:	Entrez Gene 55854 Human Q8WU90
Background:	Protects DRG1 from proteolytic degradation (By similarity).
Synonyms:	DFRP1, LEREPO4, HSPC303, HT010, MSTP012, PP730
Note:	Molecular Weight: 48602 Da



[View online »](#)

Product images:

ZC3H15 Antibody (C-term) western blot analysis in NCI-H460 cell line lysates (35 ug/lane). This demonstrates the ZC3H15 antibody detected the ZC3H15 protein (arrow).



ZC3H15 antibody (C-term) immunohistochemistry analysis in formalin fixed and paraffin embedded human colon carcinoma followed by peroxidase conjugation of the secondary antibody and DAB staining. This data demonstrates the use of the ZC3H15 antibody (C-term) for immunohistochemistry. Clinical relevance has not been evaluated.