

Product datasheet for **AP54617PU-N**

ZBTB8B (C-term) Rabbit Polyclonal Antibody

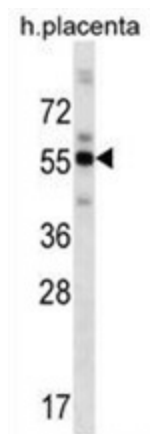
Product data:

Product Type:	Primary Antibodies
Applications:	WB
Recommended Dilution:	ELISA: 1:1;000. Western blot: 1:100~500.
Reactivity:	Human
Host:	Rabbit
Isotype:	Ig
Clonality:	Polyclonal
Immunogen:	KLH conjugated synthetic peptide between 449-478 amino acids from the C-terminal region of human ZBTB8B
Specificity:	This antibody detects ZBTB8B (C-term).
Formulation:	PBS with 0.09% (W/V) sodium azide State: Aff - Purified State: Liquid Ig fraction
Concentration:	lot specific
Purification:	Protein A column followed by peptide affinity purification
Conjugation:	Unconjugated
Storage:	Store at 2 - 8 °C for up to six months or (in aliquots) at -20 °C for longer. Avoid repeated freezing and thawing.
Stability:	Shelf life: one year from despatch.
Gene Name:	zinc finger and BTB domain containing 8B
Database Link:	Entrez Gene 728116 Human Q8NAP8
Background:	ZBTB8B may be involved in transcriptional regulation.
Synonyms:	DKFZp547H154; RP1-27O5.1
Note:	Molecular Weight: 54175 Da



[View online »](#)

Product images:



ZBTB8B Antibody (C-term) western blot analysis in human placenta tissue lysates (35 ug/lane). This demonstrates the ZBTB8B antibody detected the ZBTB8B protein (arrow).