

Product datasheet for **AP54615PU-N**

ZBTB46 (Center) Rabbit Polyclonal Antibody

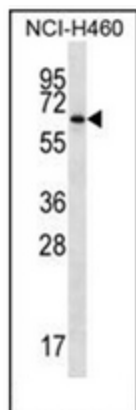
Product data:

Product Type:	Primary Antibodies
Applications:	WB
Recommended Dilution:	ELISA: 1/1000. Western Blot: 1/50-1/100.
Reactivity:	Human
Host:	Rabbit
Isotype:	Ig
Clonality:	Polyclonal
Immunogen:	KLH conjugated synthetic peptide between 250-279 amino acids from the Central region of human ZBTB46
Specificity:	This antibody detects Human BTBD4 / ZNF340 (Center).
Formulation:	PBS containing 0.09% (W/V) Sodium Azide as preservative State: Aff - Purified State: Liquid purified Ig fraction
Concentration:	lot specific
Purification:	Protein A column followed by peptide affinity purification
Conjugation:	Unconjugated
Storage:	Store undiluted at 2-8°C for one month or (in aliquots) at -20°C for longer. Avoid repeated freezing and thawing.
Stability:	Shelf life: one year from despatch.
Gene Name:	zinc finger and BTB domain containing 46
Database Link:	Entrez Gene 140685 Human Q86UZ6
Background:	ZBTB46 may be involved in transcriptional regulation.
Synonyms:	ZBTB46
Note:	Molecular Weight: 64083 Da



[View online »](#)

Product images:



Western blot analysis of ZBTB46 Antibody (Center) in NCI-H460 cell line lysates (35ug/lane). This demonstrates the ZBTB46 antibody detected the ZBTB46 protein (arrow).