

## Product datasheet for **AP54612PU-N**

### ZBTB38 (N-term) Rabbit Polyclonal Antibody

#### Product data:

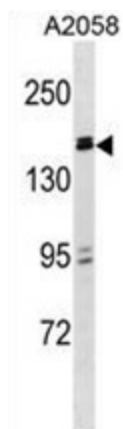
Product Type:	Primary Antibodies
Applications:	WB
Recommended Dilution:	ELISA: 1:1;000. Western blot: 1:100~500.
Reactivity:	Human
Host:	Rabbit
Isotype:	Ig
Clonality:	Polyclonal
Immunogen:	KLH conjugated synthetic peptide between 132-161 amino acids from the N-terminal region of human ZBTB38
Specificity:	This antibody detects ZBTB38 (N-term).
Formulation:	PBS with 0.09% (W/V) sodium azide State: Aff - Purified State: Liquid Ig fraction
Concentration:	lot specific
Purification:	Protein A column followed by peptide affinity purification
Conjugation:	Unconjugated
Storage:	Store at 2 - 8 °C for up to six months or (in aliquots) at -20 °C for longer. Avoid repeated freezing and thawing.
Stability:	Shelf life: one year from despatch.
Gene Name:	zinc finger and BTB domain containing 38
Database Link:	<a href="#">Entrez Gene 253461 Human Q8NAP3</a>
Background:	The protein encoded by this gene is a zinc finger transcriptional activator that binds methylated DNA. The encoded protein can form homodimers or heterodimers through the zinc finger domains. In mouse, inhibition of this protein has been associated with apoptosis in some cell types.
Synonyms:	CIBZ; FLJ22332; FLJ31131; FLJ35036



[View online »](#)

Note: **Molecular Weight:** 134257 Da

**Product images:**



ZBTB38 Antibody (N-term) western blot analysis in A2058 cell line lysates (35 ug/lane). This demonstrates the ZBTB38 antibody detected the ZBTB38 protein (arrow).