

## Product datasheet for **AP54610PU-N**

### ZBTB10 (C-term) Rabbit Polyclonal Antibody

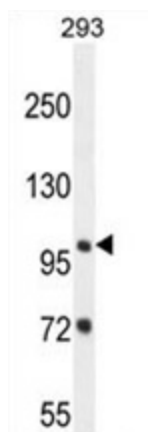
#### Product data:

|                       |  |
|-----------------------|--|
| Product Type:         | Primary Antibodies   |
| Applications:         | WB   |
| Recommended Dilution: | ELISA: 1:1;000.<br>Western blot: 1:100~500.  |
| Reactivity:           | Human  |
| Host:                 | Rabbit   |
| Isotype:              | Ig   |
| Clonality:            | Polyclonal   |
| Immunogen:            | KLH conjugated synthetic peptide between 560-590 amino acids from the C-terminal region of human ZBTB10            |
| Specificity:          | This antibody detects ZBTB10 (C-term).   |
| Formulation:          | PBS with 0.09% (W/V) sodium azide<br>State: Aff - Purified<br>State: Liquid Ig fraction                            |
| Concentration:        | lot specific   |
| Purification:         | Protein A column followed by peptide affinity purification   |
| Conjugation:          | Unconjugated   |
| Storage:              | Store at 2 - 8 °C for up to six months or (in aliquots) at -20 °C for longer. Avoid repeated freezing and thawing. |
| Stability:            | Shelf life: one year from despatch.  |
| Gene Name:            | zinc finger and BTB domain containing 10   |
| Database Link:        | <a href="#">Entrez Gene 65986 Human Q96DT7</a>   |
| Background:           | May be involved in transcriptional regulation.   |
| Synonyms:             | RINZF, RINZFC  |
| Note:                 | <b>Molecular Weight:</b> 92444 Da  |
| Protein Families:     | Transcription Factors  |



[View online »](#)

## Product images:



ZBTB10 Antibody (C-term) western blot analysis in 293 cell line lysates (35 ug/lane). This demonstrates the ZBTB10 antibody detected the ZBTB10 protein (arrow).