

## Product datasheet for **AP54604PU-N**

### YTHDF2 (C-term) Rabbit Polyclonal Antibody

#### Product data:

Product Type:	Primary Antibodies
Applications:	WB
Recommended Dilution:	ELISA: 1:1;000. Western blot: 1:100~500.
Reactivity:	Human
Host:	Rabbit
Isotype:	Ig
Clonality:	Polyclonal
Immunogen:	KLH conjugated synthetic peptide between 550-579 amino acids from the C-terminal region of human YTHD2
Specificity:	This antibody detects YTHDF2 (C-term).
Formulation:	PBS with 0.09% (W/V) sodium azide State: Aff - Purified State: Liquid Ig fraction
Concentration:	lot specific
Purification:	Protein A column followed by peptide affinity purification
Conjugation:	Unconjugated
Storage:	Store at 2 - 8 °C for up to six months or (in aliquots) at -20 °C for longer. Avoid repeated freezing and thawing.
Stability:	Shelf life: one year from despatch.
Gene Name:	YTH N6-methyladenosine RNA binding protein 2
Database Link:	<a href="#">Entrez Gene 51441 Human Q9Y5A9</a>



[View online »](#)

**Background:**

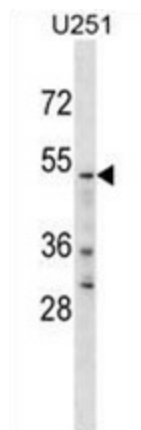
YTHDF2 is a member of the YTH (YT521-B homology) superfamily containing YTH domain. The YTH domain is typical for the eukaryotes and is particularly abundant in plants. The YTH domain is usually located in the middle of the protein sequence and may function in binding to RNA. In addition to a YTH domain, this protein has a proline rich region which may be involved in signal transduction. An Alu-rich domain has been identified in one of the introns of this gene, which is thought to be associated with human longevity. In addition, reciprocal translocations between this gene and the Runx1 (AML1) gene on chromosome 21 has been observed in patients with acute myeloid leukemia. This gene was initially mapped to chromosome 14, which was later turned out to be a pseudogene.

**Synonyms:**

HGRG8, KW-14, NY-REN-2

**Note:**

**Molecular Weight:** Isoform2 57kd. 62334 Da

**Product images:**

YTHD2 Antibody (C-term) western blot analysis in U251 cell line lysates (35 ug/lane). This demonstrates the YTHD2 antibody detected the YTHD2 protein (arrow).