

Product datasheet for **AP54602PU-N**

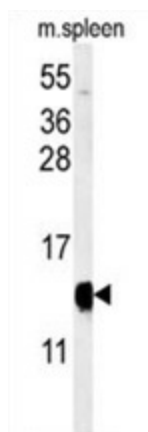
YPEL5 (C-term) Rabbit Polyclonal Antibody

Product data:

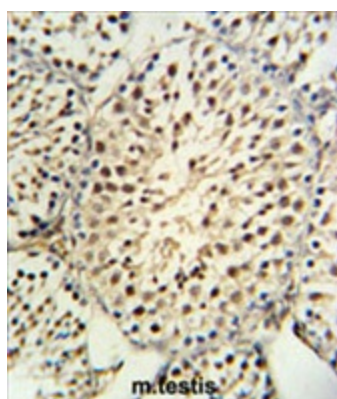
Product Type:	Primary Antibodies
Applications:	IHC, WB
Recommended Dilution:	ELISA : 1:1;000. Western blot: 1:100~500. Immunohistochemistry on paraffin sections: 1:50~100.
Reactivity:	Human, Mouse
Host:	Rabbit
Isotype:	Ig
Clonality:	Polyclonal
Immunogen:	KLH conjugated synthetic peptide between amino acids 91-121 from the C-terminal region of human YPEL5
Specificity:	This antibody detects YPEL5 (C-term).
Formulation:	PBS with 0.09% (W/V) sodium azide State: Aff - Purified State: Liquid Ig fraction
Concentration:	lot specific
Purification:	Protein A column followed by peptide affinity purification
Conjugation:	Unconjugated
Storage:	Store at 2 - 8 °C for up to six months or (in aliquots) at -20 °C for longer. Avoid repeated freezing and thawing.
Stability:	Shelf life: one year from despatch.
Gene Name:	yippee like 5
Database Link:	Entrez Gene 383295 Mouse Entrez Gene 51646 Human P62699
Synonyms:	Protein yippee-like 5, CGI-127
Note:	Molecular Weight: 13842 Da



[View online »](#)

Product images:

Western blot analysis of YPEL5 Antibody (C-term) in mouse spleen tissue lysates (35 ug/lane). YPEL5 (arrow) was detected using the purified Pab.



YPEL5 Antibody (C-term) IHC analysis in formalin fixed and paraffin embedded mouse testis tissue followed by peroxidase conjugation of the secondary antibody and DAB staining. This data demonstrates the use of the YPEL5 Antibody (C-term) for immunohistochemistry. Clinical relevance has not been evaluated.