

## Product datasheet for **AP54597PU-N**

### YIPF1 (N-term) Rabbit Polyclonal Antibody

#### Product data:

Product Type:	Primary Antibodies
Applications:	IHC, WB
Recommended Dilution:	ELISA: 1:1;000. Western blot: 1:100~500. Immunohistochemistry: 1:10~50.
Reactivity:	Human
Host:	Rabbit
Isotype:	Ig
Clonality:	Polyclonal
Immunogen:	KLH conjugated synthetic peptide between 41-71 amino acids from the N-terminal region of human YIPF1
Specificity:	This antibody detects YIPF1 (N-term).
Formulation:	PBS with 0.09% (W/V) sodium azide State: Aff - Purified State: Liquid Ig fraction
Concentration:	lot specific
Purification:	Protein A column followed by peptide affinity purification
Conjugation:	Unconjugated
Storage:	Store at 2 - 8 °C for up to six months or (in aliquots) at -20 °C for longer. Avoid repeated freezing and thawing.
Stability:	Shelf life: one year from despatch.
Gene Name:	Yip1 domain family member 1
Database Link:	<a href="#">Entrez Gene 54432 Human Q9Y548</a>
Background:	YIPF1 is a multi-pass membrane protein. It belongs to the YIP1 family. The exact function of YIPF1 remains unknown. There are two named isoforms.
Synonyms:	DJ167A19.1; FinGER1

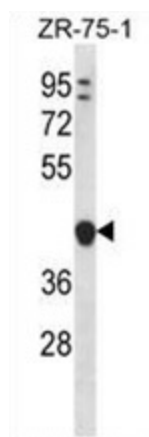


[View online »](#)

Note: **Molecular Weight:** 34277 Da

Protein Families: Transmembrane

### Product images:



YIPF1 Antibody (N-term) western blot analysis in ZR-75-1 cell line lysates (35 ug/lane). This demonstrates the YIPF1 antibody detected the YIPF1 protein (arrow).