

## Product datasheet for **AP54596PU-N**

### YIF1B (N-term) Rabbit Polyclonal Antibody

#### Product data:

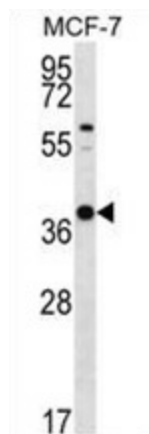
Product Type:	Primary Antibodies
Applications:	IHC, WB
Recommended Dilution:	ELISA: 1:1;000. Western blot: 1:100~500. Immunohistochemistry on paraffin sections: 1:10~50.
Reactivity:	Human
Host:	Rabbit
Isotype:	Ig
Clonality:	Polyclonal
Immunogen:	KLH conjugated synthetic peptide between 81-110 amino acids from the N-terminal region of human YIF1B
Specificity:	This antibody detects YIF1B (N-term).
Formulation:	PBS with 0.09% (W/V) sodium azide State: Aff - Purified State: Liquid Ig fraction
Concentration:	lot specific
Purification:	Protein A column followed by peptide affinity purification
Conjugation:	Unconjugated
Storage:	Store at 2 - 8 °C for up to six months or (in aliquots) at -20 °C for longer. Avoid repeated freezing and thawing.
Stability:	Shelf life: one year from despatch.
Gene Name:	Yip1 interacting factor homolog B, membrane trafficking protein
Database Link:	<a href="#">Entrez Gene 90522 Human Q5BJH7</a>
Background:	YIF1B belongs to the YIF1 family. The functions of YIF1B remain unknown.
Synonyms:	PP4519, UNQ3073/PRO9905
Note:	<b>Molecular Weight:</b> 34435 Da



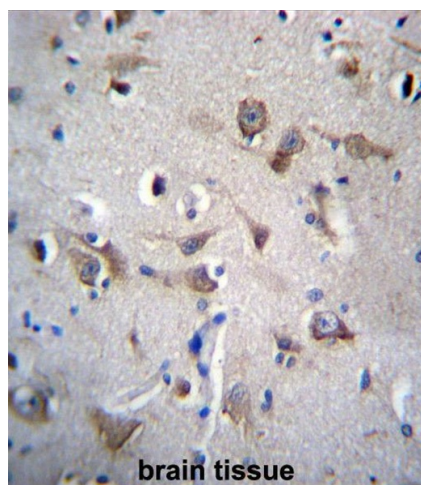
[View online »](#)

Protein Families: Transmembrane

### Product images:



YIF1B Antibody (N-term) western blot analysis in MCF-7 cell line lysates (35 ug/lane). This demonstrates the YIF1B antibody detected the YIF1B protein (arrow).



YIF1B Antibody (N-term) immunohistochemistry analysis in formalin fixed and paraffin embedded human brain tissue followed by peroxidase conjugation of the secondary antibody and DAB staining. This data demonstrates the use of YIF1B Antibody (N-term) for immunohistochemistry. Clinical relevance has not been evaluated.