

Product datasheet for **AP54595PU-N**

YI016 (C-term) Rabbit Polyclonal Antibody

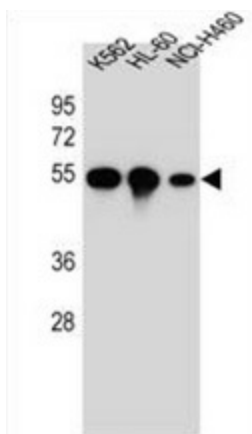
Product data:

Product Type:	Primary Antibodies
Applications:	IF, IHC, WB
Recommended Dilution:	ELISA: 1/1000. Western Blot: 1/100-1/500. Immunofluorescence: 1/10-1/50. Immunohistochemistry on Paraffin Sections: 1/10-1/50.
Reactivity:	Human
Host:	Rabbit
Isotype:	Ig
Clonality:	Polyclonal
Immunogen:	KLH conjugated synthetic peptide between 260-288 amino acids from the C-terminal region of Human YI016
Specificity:	This antibody detects Human YI016 (C-term).
Formulation:	PBS containing 0.09% (W/V) Sodium Azide as preservative State: Aff - Purified State: Liquid purified Ig fraction
Concentration:	lot specific
Purification:	Protein A column, followed by peptide affinity purification
Conjugation:	Unconjugated
Storage:	Store undiluted at 2-8°C for one month or (in aliquots) at -20°C for longer. Avoid repeated freezing and thawing.
Stability:	Shelf life: one year from despatch.
Database Link:	A6NKZ8
Background:	Tubulin is the major constituent of microtubules. It binds two moles of GTP, one at an exchangeable site on the beta chain and one at a non-exchangeable site on the alpha-chain (By similarity).
Synonyms:	Putative tubulin beta chain-like protein ENSP00000290377
Note:	Molecular Weight: 41775 Da

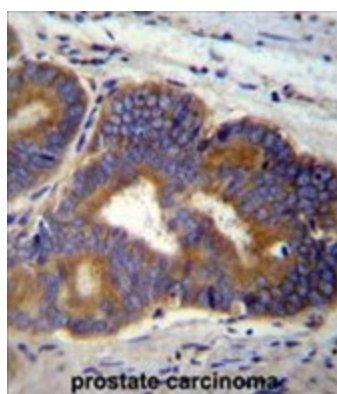


[View online »](#)

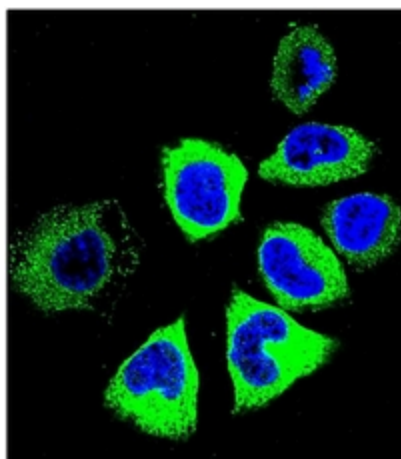
Product images:



Western blot analysis of YI016 Antibody (C-term) Cat.-No AP54595PU-N in K562, HL-60, NCI-H460 cell line lysates (35 g/lane). This demonstrates the YI016 antibody detected the YI016 protein (arrow).



Formalin fixed, paraffin embedded human prostate carcinoma stained with YI016 Antibody (C-term) Cat.-No AP54595PU-N followed by peroxidase conjugation of the secondary antibody and DAB staining.



Confocal immunofluorescent analysis of YI016 Antibody (C-term) Cat.-No AP54595PU-N with NCI-H460 cell followed by Alexa Fluor 488-conjugated Goat anti-Rabbit IgG (green). DAPI was used to stain the cell nuclear (blue).