

## Product datasheet for **AP54592PU-N**

### YAP1 (Center) Rabbit Polyclonal Antibody

#### Product data:

Product Type:	Primary Antibodies
Applications:	WB
Recommended Dilution:	ELISA: 1:1;000. Western blot: 1:100~500.
Reactivity:	Human
Host:	Rabbit
Isotype:	Ig
Clonality:	Polyclonal
Immunogen:	KLH conjugated synthetic peptide between 103-133 amino acids from the Central region of human YAP
Specificity:	This antibody detects YAP1 (Center).
Formulation:	PBS with 0.09% (W/V) sodium azide State: Aff - Purified State: Liquid Ig fraction
Concentration:	lot specific
Purification:	Protein A column followed by peptide affinity purification
Conjugation:	Unconjugated
Storage:	Store at 2 - 8 °C for up to six months or (in aliquots) at -20 °C for longer. Avoid repeated freezing and thawing.
Stability:	Shelf life: one year from despatch.
Gene Name:	Yes associated protein 1
Database Link:	<a href="#">Entrez Gene 10413 Human P46937</a>
Background:	YAP is the human ortholog of chicken YAP protein which binds to the SH3 domain of the Yes proto-oncogene product. This protein contains a WW domain that is found in various structural, regulatory and signaling molecules in yeast, nematode, and mammals, and may be involved in protein-protein interaction.
Synonyms:	YAP, YAP65

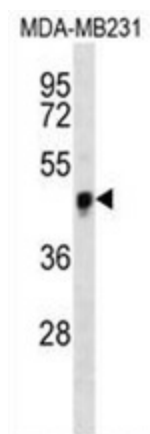


[View online »](#)

Note: **Molecular Weight:** 54462 Da

Protein Families: Druggable Genome

### Product images:



YAP Antibody western blot analysis in MDA-MB231 cell line lysates (35 ug/lane). This demonstrates the YAP antibody detected the YAP protein (arrow).