

## Product datasheet for **AP54591PU-N**

### **XYLT1 (N-term) Rabbit Polyclonal Antibody**

#### **Product data:**

<b>Product Type:</b>	Primary Antibodies
<b>Applications:</b>	WB
<b>Recommended Dilution:</b>	ELISA: 1:1;000. Western blot: 1:100~500.
<b>Reactivity:</b>	Human
<b>Host:</b>	Rabbit
<b>Isotype:</b>	Ig
<b>Clonality:</b>	Polyclonal
<b>Immunogen:</b>	KLH conjugated synthetic peptide between 133-163 amino acids from the N-terminal region of human XYLT1
<b>Specificity:</b>	This antibody detects XYLT1 (N-term).
<b>Formulation:</b>	PBS with 0.09% (W/V) sodium azide State: Aff - Purified State: Liquid Ig fraction
<b>Concentration:</b>	lot specific
<b>Purification:</b>	Protein A column followed by peptide affinity purification
<b>Conjugation:</b>	Unconjugated
<b>Storage:</b>	Store at 2 - 8 °C for up to six months or (in aliquots) at -20 °C for longer. Avoid repeated freezing and thawing.
<b>Stability:</b>	Shelf life: one year from despatch.
<b>Gene Name:</b>	xylosyltransferase 1
<b>Database Link:</b>	<a href="#">Entrez Gene 64131 Human Q86Y38</a>
<b>Background:</b>	This locus encodes a xylosyltransferase enzyme. The encoded protein catalyzes transfer of UDP-xylose to serine residues of an acceptor protein substrate. This transfer reaction is necessary for biosynthesis of glycosaminoglycan chains. Mutations in this gene have been associated with increased severity of pseudoxanthoma elasticum.
<b>Synonyms:</b>	XYLT1, XT1, XT-I, XylT-I



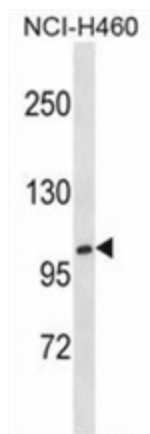
[View online »](#)

**Note:** **Molecular Weight:** 107569 Da

**Protein Families:** Transmembrane

**Protein Pathways:** Chondroitin sulfate biosynthesis, Heparan sulfate biosynthesis, Metabolic pathways

**Product images:**



XYLT1 Antibody (N-term) western blot analysis in NCI-H460 cell line lysates (35 ug/lane). This demonstrates the XYLT1 antibody detected the XYLT1 protein (arrow).