

Product datasheet for **AP54589PU-N**

Exportin 5 (XPO5) (1122-1152) Rabbit Polyclonal Antibody

Product data:

Product Type:	Primary Antibodies
Applications:	WB
Recommended Dilution:	ELISA: 1/1000. Western Blot: 1/100-1/500.
Reactivity:	Human
Host:	Rabbit
Isotype:	Ig
Clonality:	Polyclonal
Immunogen:	KLH conjugated synthetic peptide between 1122-1152 amino acids from the C-terminal region of Human Exportin-5.
Specificity:	This antibody detects Human XPO5 / Exportin-5 (C-term).
Formulation:	PBS State: Aff - Purified State: Liquid purified Ig fraction Preservative: 0.09% (W/V) Sodium Azide
Concentration:	lot specific
Purification:	Protein A column, followed by peptide affinity purification
Conjugation:	Unconjugated
Storage:	Store undiluted at 2-8°C for one month or (in aliquots) at -20°C for longer. Avoid repeated freezing and thawing.
Stability:	Shelf life: one year from despatch.
Gene Name:	exportin 5
Database Link:	Entrez Gene 57510 Human Q9HAV4
Background:	Exportin-5 belongs to a large family of karyopherins (see MIM 602738) that mediate the transport of proteins and other cargo between the nuclear and cytoplasmic compartments.
Synonyms:	KIAA1291, RANBP21

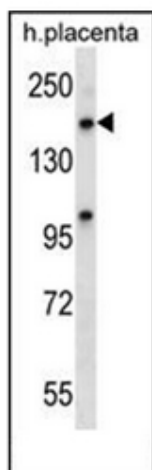


[View online »](#)

Note: **Molecular Weight:** 136311 Da

Protein Families: Druggable Genome

Product images:



Western blot analysis of XPO5 Antibody (C-term) in human placenta tissue lysates (35 ug/lane). This demonstrates the XPO5 antibody detected the XPO5 protein (arrow).