

Product datasheet for **AP54586PU-N**

XKRX (C-term) Rabbit Polyclonal Antibody

Product data:

Product Type:	Primary Antibodies
Applications:	WB
Recommended Dilution:	ELISA: 1:1;000. Western blot: 1:100~500.
Reactivity:	Human
Host:	Rabbit
Isotype:	Ig
Clonality:	Polyclonal
Immunogen:	KLH conjugated synthetic peptide between 316-345 amino acids from the C-terminal region of human XKRX
Specificity:	This antibody detects XKRX (C-term).
Formulation:	PBS with 0.09% (W/V) sodium azide State: Aff - Purified State: Liquid Ig fraction
Concentration:	lot specific
Purification:	Protein A column followed by peptide affinity purification
Conjugation:	Unconjugated
Storage:	Store at 2 - 8 °C for up to six months or (in aliquots) at -20 °C for longer. Avoid repeated freezing and thawing.
Stability:	Shelf life: one year from despatch.
Gene Name:	XK related, X-linked
Database Link:	Entrez Gene 402415 Human Q6PP77
Background:	This gene encodes a protein that is related to a component of the XK/Kell complex of the Kell blood group system. The encoded protein includes several transmembrane domains, is known to be exposed to the cell surface, and may function as a membrane transporter.
Synonyms:	XK-related protein 2, XKR2, XPLAC, XRG2, Membrane protein XPLAC, X Kell blood group-related, X-linked

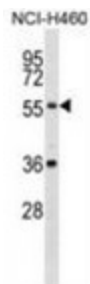


[View online »](#)

Note: **Molecular Weight:** 52052 Da

Protein Families: Transmembrane

Product images:



XKRX Antibody (C-term) western blot analysis in NCI-H460 cell line lysates (35 ug/lane). This demonstrates the XKRX antibody detected the XKRX protein (arrow).