

Product datasheet for **AP54583PU-N**

XKR3 (C-term) Rabbit Polyclonal Antibody

Product data:

Product Type:	Primary Antibodies
Applications:	WB
Recommended Dilution:	ELISA: 1:1;000. Western blot: 1:100~500.
Reactivity:	Human
Host:	Rabbit
Isotype:	Ig
Clonality:	Polyclonal
Immunogen:	KLH conjugated synthetic peptide between 409-438 amino acids from the C-terminal region of human XKR3
Specificity:	This antibody detects XKR3 (C-term).
Formulation:	PBS with 0.09% (W/V) sodium azide State: Aff - Purified State: Liquid Ig fraction
Concentration:	lot specific
Purification:	Protein A column followed by peptide affinity purification
Conjugation:	Unconjugated
Storage:	Store at 2 - 8 °C for up to six months or (in aliquots) at -20 °C for longer. Avoid repeated freezing and thawing.
Stability:	Shelf life: one year from despatch.
Gene Name:	XK related 3
Database Link:	Entrez Gene 150165 Human Q5GH77
Background:	XKRX (MIM 300684) and XKR3 are homologs of the Kell blood group precursor XK (MIM 314850), which is a putative membrane transporter and a component of the XK/Kell complex of the Kell blood group system (Calenda et al., 2006 [PubMed 16431037]).
Synonyms:	XK-related protein 3,XRG3

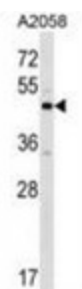


[View online »](#)

Note: **Molecular Weight:** 53448 Da

Protein Families: Transmembrane

Product images:



XKR3 Antibody (C-term) western blot analysis in A2058 cell line lysates (35 ug/lane). This demonstrates the XKR3 antibody detected the XKR3 protein (arrow).