

## Product datasheet for **AP54581PU-N**

### CCXCR1 (XCR1) (C-term) Rabbit Polyclonal Antibody

#### Product data:

Product Type:	Primary Antibodies
Applications:	WB
Recommended Dilution:	ELISA: 1:1;000. Western blot: 1:100~500.
Reactivity:	Human
Host:	Rabbit
Isotype:	Ig
Clonality:	Polyclonal
Immunogen:	KLH conjugated synthetic peptide between 302-333 amino acids from the C-terminal region of human XCR1
Specificity:	This antibody detects XCR1 / GPR5 (C-term).
Formulation:	PBS with 0.09% (W/V) sodium azide State: Aff - Purified State: Liquid Ig fraction
Concentration:	lot specific
Purification:	Protein A column followed by peptide affinity purification
Conjugation:	Unconjugated
Storage:	Store at 2 - 8 °C for up to six months or (in aliquots) at -20 °C for longer. Avoid repeated freezing and thawing.
Stability:	Shelf life: one year from despatch.
Gene Name:	X-C motif chemokine receptor 1
Database Link:	<a href="#">Entrez Gene 2829 Human P46094</a>



[View online »](#)

**Background:** The protein encoded by this gene is a chemokine receptor belonging to the G protein-coupled receptor superfamily. The family members are characterized by the presence of 7 transmembrane domains and numerous conserved amino acids. This receptor is most closely related to RBS11 and the MIP1-alpha/RANTES receptor. It transduces a signal by increasing the intracellular calcium ions level. The viral macrophage inflammatory protein-II is an antagonist of this receptor and blocks signaling. Two alternatively spliced transcript variants encoding the same protein have been found for this gene.

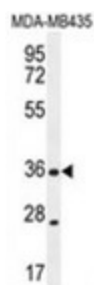
**Synonyms:** CCXCR1

**Note:** **Molecular Weight:** 38508 Da

**Protein Families:** Druggable Genome, GPCR, Transmembrane

**Protein Pathways:** Chemokine signaling pathway, Cytokine-cytokine receptor interaction

### Product images:



XCR1 Antibody (C-term) western blot analysis in MDA-MB435 cell line lysates (35 ug/lane). This demonstrates the XCR1 antibody detected the XCR1 protein (arrow).