

Product datasheet for **AP54578PU-N**

TAZ (WWTR1) (C-term) Rabbit Polyclonal Antibody

Product data:

Product Type:	Primary Antibodies
Applications:	WB
Recommended Dilution:	ELISA: 1:1;000. Western blot: 1:100~500.
Reactivity:	Human
Host:	Rabbit
Isotype:	Ig
Clonality:	Polyclonal
Immunogen:	KLH conjugated synthetic peptide between 369-398 amino acids from the C-terminal region of human WWTR1.
Specificity:	This antibody detects WWTR1 / TAZ (C-term).
Formulation:	PBS with 0.09% (W/V) sodium azide State: Aff - Purified State: Liquid Ig fraction
Concentration:	lot specific
Purification:	Protein A column followed by peptide affinity purification
Conjugation:	Unconjugated
Storage:	Store at 2 - 8 °C for up to six months or (in aliquots) at -20 °C for longer. Avoid repeated freezing and thawing.
Stability:	Shelf life: one year from despatch.
Gene Name:	WW domain containing transcription regulator 1
Database Link:	Entrez Gene 25937 Human Q9GZV5



[View online »](#)

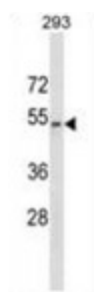
Background: Transcriptional coactivator which acts as a downstream regulatory target in the Hippo signaling pathway that plays a pivotal role in organ size control and tumor suppression by restricting proliferation and promoting apoptosis. The core of this pathway is composed of a kinase cascade wherein MST1/MST2, in complex with its regulatory protein SAV1, phosphorylates and activates LATS1/2 in complex with its regulatory protein MOB1, which in turn phosphorylates and inactivates YAP1 oncoprotein and WWTR1/TAZ. WWTR1 enhances PAX8 and NKX2-1/TTF1-dependent gene activation. Regulates the nuclear accumulation of SMADS and has a key role in coupling them to the transcriptional machinery such as the mediator complex. Regulates embryonic stem-cell self-renewal, promotes cell proliferation and epithelial-mesenchymal transition.

Synonyms: DKFZp586i1419; FLJ27004; FLJ45718; TAZ

Note: **Molecular Weight:** 44101 Da

Protein Families: Druggable Genome, Transcription Factors

Product images:



WWTR1 Antibody (C-term) western blot analysis in 293 cell line lysates (35 ug/lane). This demonstrates the WWTR1 antibody detected the WWTR1 protein (arrow).