

Product datasheet for **AP54575PU-N**

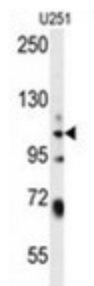
WWC3 (C-term) Rabbit Polyclonal Antibody

Product data:

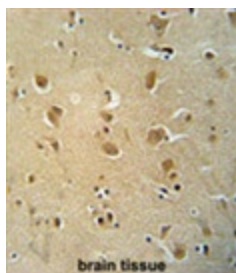
Product Type:	Primary Antibodies
Applications:	IHC, WB
Recommended Dilution:	ELISA: 1:1;000. Western blot: 1:100~500. Immunohistochemistry on paraffin sections: 1:50~100.
Reactivity:	Human
Host:	Rabbit
Isotype:	Ig
Clonality:	Polyclonal
Immunogen:	KLH conjugated synthetic peptide between 1015-1045 amino acids from the C-terminal region of human WWC3
Specificity:	This antibody detects WWC3 (C-term).
Formulation:	PBS with 0.09% (W/V) sodium azide State: Aff - Purified State: Liquid Ig fraction
Concentration:	lot specific
Purification:	Protein A column followed by peptide affinity purification
Conjugation:	Unconjugated
Storage:	Store at 2 - 8 °C for up to six months or (in aliquots) at -20 °C for longer. Avoid repeated freezing and thawing.
Stability:	Shelf life: one year from despatch.
Gene Name:	WWC family member 3
Database Link:	Entrez Gene 55841 Human Q9ULE0
Synonyms:	Protein ,KIAA1280
Note:	Molecular Weight: 122676 Da



[View online »](#)

Product images:

WWC3 Antibody (C-term) western blot analysis in U251 cell line lysates (35 ug/lane). This demonstrates the WWC3 antibody detected the WWC3 protein (arrow).



WWC3 antibody (C-term) immunohistochemistry analysis in formalin fixed and paraffin embedded human brain tissue followed by peroxidase conjugation of the secondary antibody and DAB staining. This data demonstrates the use of the WWC3 antibody (C-term) for immunohistochemistry. Clinical relevance has not been evaluated.