

Product datasheet for **AP54574PU-N**

KIBRA (WWC1) (N-term) Rabbit Polyclonal Antibody

Product data:

Product Type:	Primary Antibodies
Applications:	WB
Recommended Dilution:	ELISA: 1:1;000. Western blot: 1:100~500.
Reactivity:	Human
Host:	Rabbit
Isotype:	Ig
Clonality:	Polyclonal
Immunogen:	KLH conjugated synthetic peptide between 289-327 amino acids from the N-terminal region of human WWC1
Specificity:	This antibody detects WWC1 (N-term).
Formulation:	PBS with 0.09% (W/V) sodium azide State: Aff - Purified State: Liquid Ig fraction
Concentration:	lot specific
Purification:	Protein A column followed by peptide affinity purification
Conjugation:	Unconjugated
Storage:	Store at 2 - 8 °C for up to six months or (in aliquots) at -20 °C for longer. Avoid repeated freezing and thawing.
Stability:	Shelf life: one year from despatch.
Gene Name:	WW and C2 domain containing 1
Database Link:	Entrez Gene 23286 Human Q8IX03
Background:	The protein encoded by this gene is a cytoplasmic phosphoprotein that interacts with PRKC-zeta and dynein light chain-1. Alleles of this gene have been found that enhance memory in some individuals. Three transcript variants encoding different isoforms have been found for this gene.

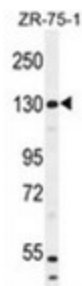


[View online »](#)

Synonyms: WWC1, KIAA0869, WW domain-containing protein 1, Kidney and brain protein, KIBRA, HBeAg-binding protein 3

Note: **Molecular Weight:** 125301 Da

Product images:



WWC1 Antibody (N-term) western blot analysis in ZR-75-1 cell line lysates (35 ug/lane). This demonstrates the WWC1 antibody detected the WWC1 protein (arrow).