

Product datasheet for **AP54573PU-N**

WTIP (C-term) Rabbit Polyclonal Antibody

Product data:

Product Type:	Primary Antibodies
Applications:	IF, IHC, WB
Recommended Dilution:	ELISA: 1:1;000. Western blot: 1:100~500. Immunohistochemistry on paraffin sections: 1:10~50. Immunofluorescence: 1:10~50.
Reactivity:	Human
Host:	Rabbit
Isotype:	Ig
Clonality:	Polyclonal
Immunogen:	KLH conjugated synthetic peptide between 474-503 amino acids from the C-terminal region of human WTIP
Specificity:	This antibody detects WTIP (C-term).
Formulation:	PBS with 0.09% (W/V) sodium azide State: Aff - Purified State: Liquid Ig fraction
Concentration:	lot specific
Purification:	Protein A column followed by peptide affinity purification
Conjugation:	Unconjugated
Storage:	Store at 2 - 8 °C for up to six months or (in aliquots) at -20 °C for longer. Avoid repeated freezing and thawing.
Stability:	Shelf life: one year from despatch.
Gene Name:	Wilms tumor 1 interacting protein
Database Link:	Entrez Gene 126374 Human A6NIX2



[View online »](#)

Background:

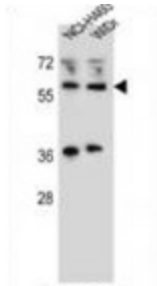
WTIP may monitor slit diaphragm protein assembly, a specialized adherens junction characteristic of podocytes. In case of podocyte injury, it shuttles into the nucleus and acts as a transcription regulator that represses WT1-dependent transcription regulation, thereby translating changes in slit diaphragm structure into altered gene expression and a less differentiated phenotype (By similarity).

Synonyms:

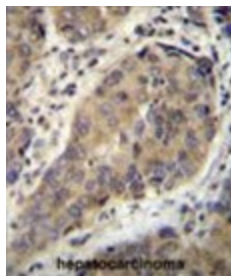
Wilms tumor protein 1-interacting protein

Note:

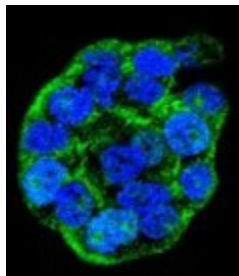
Molecular Weight: 67454 Da

Product images:


WTIP Antibody (C-term) western blot analysis in NCI-H460, WiDr cell line lysates (35 ug/lane). This demonstrates the WTIP antibody detected the WTIP protein (arrow).



WTIP Antibody (C-term) immunohistochemistry analysis in formalin fixed and paraffin embedded human hepatocarcinoma followed by peroxidase conjugation of the secondary antibody and DAB staining. This data demonstrates the use of WTIP Antibody (C-term) for immunohistochemistry. Clinical relevance has not been evaluated.



Confocal immunofluorescent analysis of WTIP Antibody (C-term) with WiDr cell followed by Alexa Fluor 488-conjugated goat anti-rabbit IgG (green). DAPI was used to stain the cell nuclear (blue).